

# On the Role of MBS Purchases for the Macroeconomic Effects of QE1\*

Hamza Polattimur<sup>1</sup>

*Universität Hamburg*

Andreas Schabert<sup>2</sup>

*University of Cologne*

This version: April 5, 2020

## **Abstract**

This paper studies the quantitative contribution of MBS purchases to the macroeconomic effects of the US Federal Reserve's first round of quantitative easing, QE1. We develop a macroeconomic model with costly financial intermediation, collateralized lending, and an explicit specification of distinct central bank asset purchase programs. We show that MBS purchases induce a fall in mortgage rates and increases in the price of collateral and in bank lending, which stimulates aggregate demand and real activity. We replicate the time paths of purchased asset and of associated price effects at the onset of the global financial crisis. Our calibrated model predicts that MBS purchases accounted for more than 85% of the (cumulated) output effects of QE1 and that an equally sized intervention with purchases of treasuries only would have led to about 30% smaller output effects.

*JEL classification:* E43, E44, E51, E52

*Keywords:* Unconventional monetary policy, mortgage debt, collateral constraints, costly financial intermediation

---

\*Financial support from the Deutsche Forschungsgemeinschaft (DFG, German Research Foundation) under Germany's Excellence Strategy – EXC 2126/1 – 390838866 and Project No. 268475812 is gratefully acknowledged.

<sup>1</sup>Corresponding author: Universität Hamburg, Department of Economics, Von-Melle-Park 5, 20146 Hamburg, Germany, e-mail: Hamza.Polattimur@uni-hamburg.de.

<sup>2</sup>University of Cologne, Center for Macroeconomic Research, Albertus-Magnus-Platz, 50923 Köln, Germany, e-mail: schabert@wiso.uni-koeln.de.

## 1 Introduction

During the global financial crisis, US Federal Reserve (Fed) lowered the policy rate to its zero lower bound (ZLB) and introduced several unconventional policy measures. Large-scale asset purchase (LSAP) programs, also known as quantitative easing (QE), were one of the main measures. Within these programs the Fed mainly purchased treasuries and mortgage-backed securities (MBS), where the latter made up a large part of the purchased assets in the first round of quantitative easing (QE1).<sup>1</sup> Figure 1 illustrates the Fed’s policy response to the crisis with the federal funds rate hitting the ZLB and purchases of MBS and long-term treasury securities. When the policy rate is stuck at the ZLB, LSAPs are expected to work either through flattening the yield curve of an asset, e.g. by purchasing long-term treasuries, or through reducing yields on other assets, e.g. through purchases of MBS, or both. Regarding the latter, the Fed argued that “housing and housing finance played a central role in precipitating the [...] crisis” and “steps that stabilize the housing market will help stabilize the economy” (see [Bernanke, 2008](#)). Specifically, MBS purchases were justified as they “should provide further support to the housing sector by encouraging home purchases and refinancing” (see [Bernanke, 2012](#)), which has been confirmed by observed reductions not only in MBS yields in secondary markets (see [Krishnamurthy and Vissing-Jorgensen, 2011](#), henceforth [KVJ11](#)), but also in mortgage rates in the primary market (see [Hancock and Passmore, 2011, 2015](#); [Fuster et al., 2017](#)) and an observed increase in bank lending (see [Rodnyansky and Darmouni, 2017](#), henceforth [RD17](#)). Despite its central role in both, the crisis and the policy response, the theoretical literature on unconventional monetary policy so far ignored the specific role of mortgage debt and MBS purchases.<sup>2</sup>

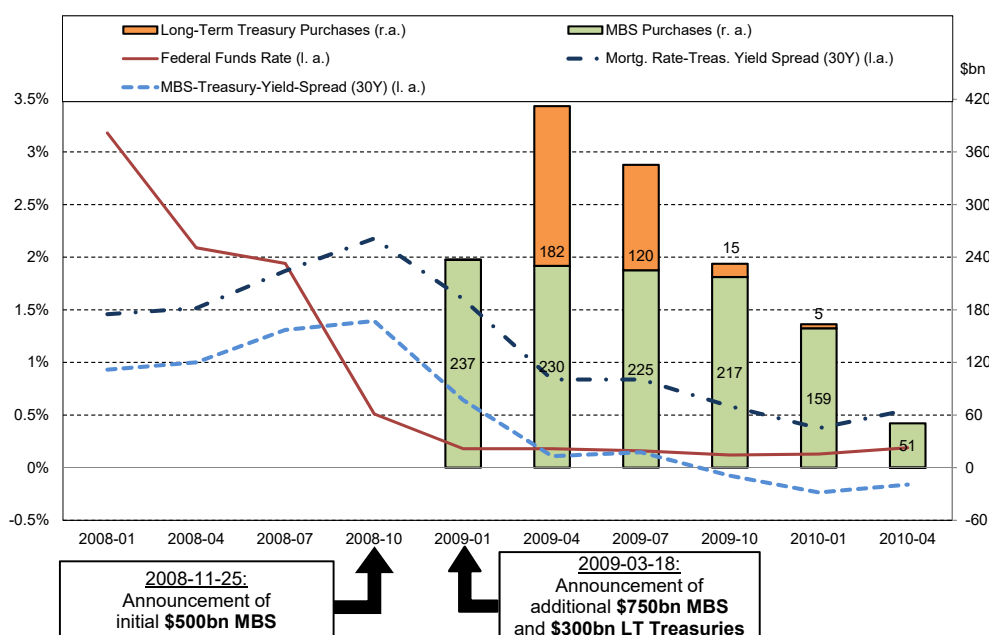
In this paper, we assess the macroeconomic effects of central bank interventions accounting for frictions associated with mortgage loans and for purchases of MBS. Given overall effects of QE1 on macroeconomic aggregates that are in the range of what empirical studies find, we quantify the importance of MBS purchases within QE1. We further present novel insights on how the implementation and composition of QE1 affected the results. For this, we apply a model with costly financial intermediation and collateralized lending, as well as with an explicit specification of central bank asset purchases against high powered money, allowing to precisely replicate the Fed’s asset purchases, as shown in Figure 2. Consistent with empirical evidence, we show that MBS purchases were more successful in reducing MBS yields and loan rates than equally-sized purchases of treasury securities<sup>3</sup> (see [KVJ11](#)), and in stimulating bank lending (see [RD17](#)). Our

---

<sup>1</sup>In November 2008, when QE1 started, the Fed announced that it would purchase MBS worth up to \$500 billion issued by the government-sponsored enterprises Fannie Mae and Freddie Mac. On March 18, 2009 the Fed decided to expand the program and to purchase additional \$750 billion of agency MBS, such that the announced total purchases added up to \$1250 billion in QE1 (see Figure 1).

<sup>2</sup>See e.g. [Curdia and Woodford \(2011\)](#); [Gertler and Karadi \(2011, 2013\)](#); [Chen et al. \(2012\)](#); [Del Negro et al. \(2017\)](#); [Woodford \(2016\)](#).

<sup>3</sup>The implied path of the spread between the yields on MBS and treasuries therefore accords to the observed



**Figure 1: Fed policy response.**

*Notes:* Fed MBS and long-term treasuries purchases in billions of USD (right axis), annual federal funds rate (red solid line), and spreads between average 30-year fix mortgage rate (dark blue dashed dotted line) Fannie Mae 30-year current-coupon MBS yield (light blue dashed line) and 30-year treasury constant maturity rate (all three left axis), 2008Q1-2010Q4. [Source: FRED & Bloomberg.]

main novel finding is that more than 85% of the cumulated (one-year) output effect of QE1 that we found can in fact be attributed to MBS purchases, although MBS made up just about half of the total volume of QE1, which highlights the importance of MBS purchases. Put differently, if the Fed’s outright asset purchases were entirely conducted in terms of treasuries, the net output effect of QE1 would have been about 30% smaller.

To account for the specific role of the mortgage market and housing, we follow [Kiyotaki and Moore \(1997\)](#) and consider two types of households, patient and impatient ones. While patient households hold deposits at financial intermediaries, the latter grant loans that are collateralized by their housing. We specify quantitative easing as secondary market purchases of eligible assets against central bank money, like in [Hoermann and Schabert \(2015\)](#). To induce demand for central bank reserves, we consider that they play a unique role for the settlement of transactions. To facilitate the calibration of the model, we do not explicitly model the settlement of bank deposit transactions (see [Bianchi and Bigio, 2017](#)) and specify the role of reserves in a parsimonious way by introducing an ad-hoc banking cost function (as in [Curdia and Woodford, 2011](#)).<sup>4</sup> Asset purchases

spread between yields on MBS and treasuries as given in Figure 1.

<sup>4</sup>Concretely, the banking cost function is specified with two key parameters, a level parameter and an elasticity of

expand the supply of reserves, which reduces intermediation costs. They further have a direct effect on prices of purchased assets when liquidity demand induces eligible assets to be scarce. Notably, these effects can occur even when the policy rate is at the ZLB, as long as the valuation of liquidity/reserves – that generally differs from the policy rate – is positive (see [Hoermann and Schabert, 2015](#)). When liquidity and eligible assets are scarce (as in the financial crisis) the central bank can influence MBS yields and thus loan rates by purchasing MBS at above-market prices.<sup>5</sup> This is particularly beneficial for borrowers, as interest rates on collateralized loans fall and banks supply more loans to households in line with empirical evidence (see [RD17](#)). The stimulation of private sector lending raises borrowers’ willingness to pay for housing and thus house prices increase<sup>6</sup>, which further alleviates the borrowing constraint of impatient households with high marginal propensity to consume. While government bond purchases are also expansionary by accommodating banks’ liquidity demand, they exert substantially smaller effects on real activity, as they impact on private agents’ borrowing conditions to a much lesser extent than MBS purchases, consistent with empirical evidence (see [KVJ11](#); [RD17](#)).

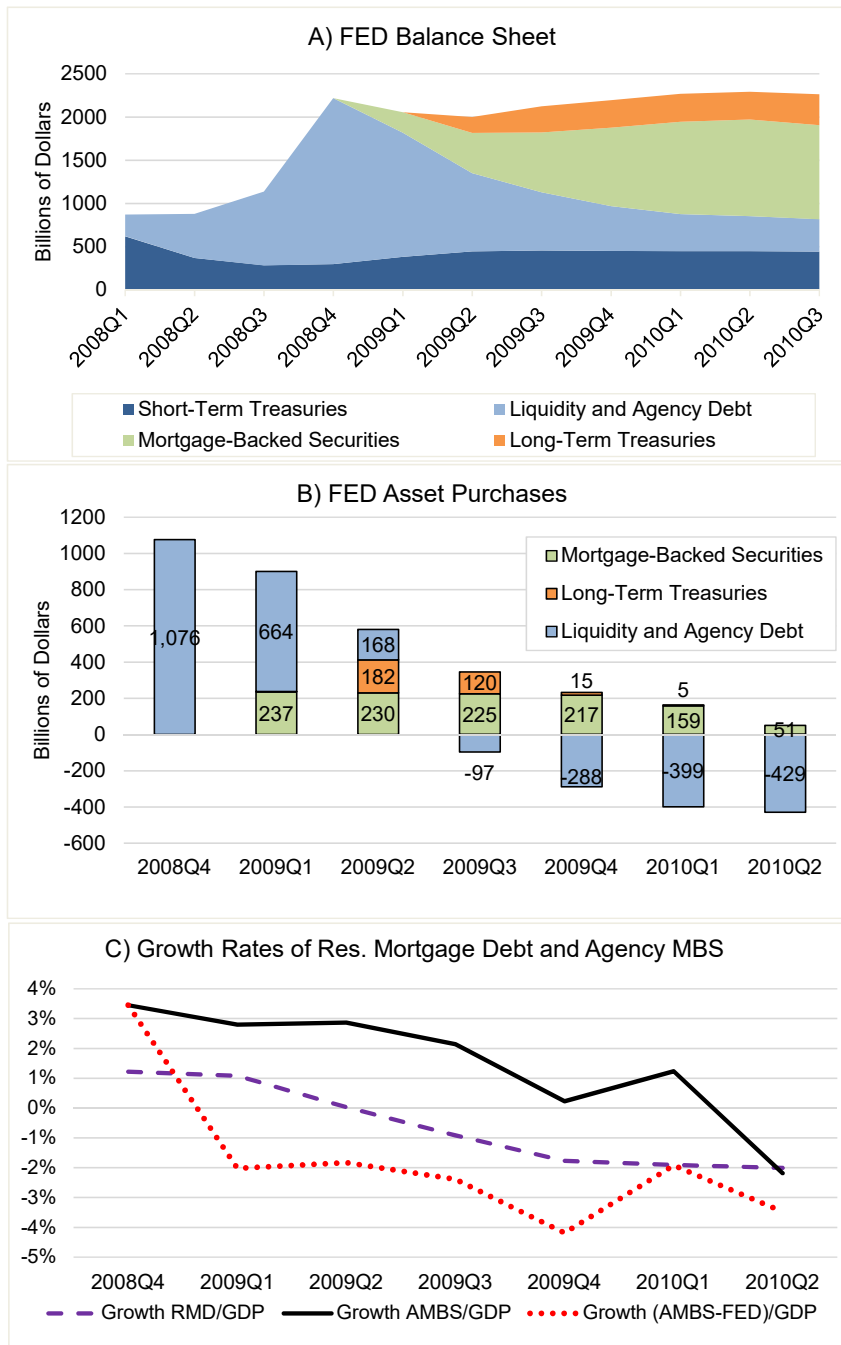
Asset purchases are specified in the model by time series models that closely mimic the time paths of actual asset purchases of the US Fed, as shown in Panel B of [Figure 2](#), where the sizes of the interventions are given relative to 2008Q3. Thereby, we distinguish between MBS purchases and other central bank interventions, which we summarize in the model by money supply against short-term and long-term treasury debt. It should further be noted that purchases of MBS (green area) and long-term treasuries (orange area) are outright transactions that add to the stock of assets held by the Fed, whereas money is temporarily supplied under liquidity facilities (light blue area, where only a small fraction consists of outright agency debt purchases). Similar to [Del Negro et al. \(2017, henceforth DEFK17\)](#), we aim at replicating, firstly, the financial crisis and, secondly, the overall effects of the QE1 asset purchases on macroeconomic aggregates and yields found in empirical studies (see below for a detailed review of this literature). To replicate core macroeconomic outcomes at the beginning of the financial crisis, we introduce shocks to financial intermediation costs, which has been found by [Ajello \(2016\)](#) to play an important role during the Great Recession. With this type of shock, the model is able to account for the fall in GDP and the increase in the MBS-treasury yield spread (see [Figure 1](#)) as observed in the data while providing a reasonable match of the path of the expected ZLB duration. It should be noted that this

---

banking costs with regard to the ratio of loans to reserves. The level parameter is calibrated to match average MBS yields between 1990Q1 and 2008Q3. The value for the elasticity is set to match the empirically observed spread effects between yields on MBS and treasuries at the start of the Fed’s intervention (see [KVJ11](#)).

<sup>5</sup>Notably, we do not distinguish between rates on mortgage debt in the secondary and the primary market, implying a full pass-through of changes in MBS rates. While this assumption is made for convenience, it is in fact supported by empirical evidence, showing that the pass-through of MBS prices induced by QE announcement was almost complete (see [Fuster et al. 2017](#)), and consistent with the paths of the empirical spreads in [Figure 1](#).

<sup>6</sup>[Guerrieri and Iacoviello \(2017\)](#) also find a tight link between house prices, borrowing, and consumption depending on the tightness of borrowing constraints.



**Figure 2: Fed balance sheet, Fed asset purchases, and growth rates of mortgage debt and MBS.**

*Notes:* Panel A: Fed balance sheet divided into short-term treasuries (dark blue), liquidity and agency debt (light blue), MBS (green), and long-term treasuries (orange). Panel B: Size of Fed interventions: Outright purchases of MBS (green) and long-term treasuries (orange) and liquidity facilities & agency debt purchases (light blue) relative to 2008Q3. Panel C: Growth rates of residential mortgage debt to GDP (violet dashed), Agency MBS including FED held (black solid), and Agency MBS excluding FED held (red dotted). [Sources: FRED & Fed Cleveland.]

strategy differs from [DEFK17](#), who introduce an (il-)liquidity shock that is calibrated to replicate an observed liquidity premium, whereas our banking cost shock allows to fully account for the output effects at the onset of the financial crisis. We then calibrate the model to replicate empirical effects of QE1 asset purchases, which allows us to elaborate the implementation and composition of QE1 by applying counterfactual analyses. Regarding yield effects, we target [KVJ11](#)'s estimates who find for QE1 a reduction in the quarterly 30 year MBS to treasury yield spread of 7 and 8.5 basis points (bps) in 2008Q4 and 2009Q1<sup>7</sup>. Regarding GDP effects, we target a 1.4% increase in GDP in response to QE1, which is what [Weale and Wieladek \(2016\)](#) find. While we quite closely match these targets quantitatively, we (at least) qualitatively replicate the following empirical findings on QE1 that provide empirical support for our transmission mechanism. Regarding macroeconomic effects of QE1, [Weale and Wieladek \(2016\)](#) also find an increase in inflation, while [Walentin \(2014\)](#) finds that QE1 also increased consumption and house prices (for details see below). Finally, recent empirical evidence highlights the importance of the bank lending channel in transmitting the effects of LSAPs to the macroeconomy. In particular, [Rodnyansky and Darmouni \(2017\)](#) and [Kurtzman et al. \(2020\)](#) show that LSAPs, especially MBS purchases, increased bank lending, which in turn increased employment (see [Luck and Zimmermann, 2020](#)) and consumption (see [Di Maggio et al., 2019](#)).

Regarding the asset purchase effects, we, firstly, find that the full QE1 program led to an increase in GDP by about 0.65%, while lowering the MBS-treasury yield spread by 5.6 bps in 2008Q4 and to an increase in GDP by about 1.47% and a fall in the spread by 9.9 bps. in 2009Q1, matching empirical evidence (see [Weale and Wieladek, 2016](#), and [KVJ11](#)). Further, inflation increased by about 0.24% in 2008Q4 and by about 0.57% in 2009Q1. This means that without intervention the drop in output and inflation would have been 8.5% and 5.4% larger in 2008Q4 and in 2009Q1 even 50% and 37% larger, which relates to the output (36% larger) and inflation (40% larger) effects without intervention found by [DEFK17](#). Cumulating the effects over 4 quarters (2008Q4-2009Q3), we find that the output contraction would have been almost 24%, the drop in inflation more than 12%, and the drop in bank lending 25% larger without intervention. Secondly, with regard to the effects of MBS purchases within QE1, we find that for the horizon of 1 year 88% of the cumulative increase in GDP, 84% of the cumulative increase in inflation, and 75% of the cumulative increase in bank lending can be attributed to MBS purchases. Hence, MBS purchases amounting to about half (52%) of the entire QE1 program, contribute by about 85% to the overall macro effects of QE1, which highlights their importance. Thirdly, we find that purchases of MBS were much more effective than purchases of long-term government bonds. Specifically, we find that a counterfactual program of the same size as QE1, where all outright purchases consist of

---

<sup>7</sup>[KVJ11](#)'s MBS purchase effects are quite close to what [Hancock and Passmore \(2011\)](#) find but since the latter only consider MBS we refer to [KVJ11](#).

treasury debt (excluding MBS), leads to (cumulated) output and inflation effects that are 28% and 35% smaller than the effects of the correctly specified QE1 program (including MBS). Put differently, this means that if we had modeled QE1 only in terms of treasury securities, we would have underestimated the effects by about 30%. We, fourthly, highlight the importance of the pre-announcement of MBS purchases, as these were announced in November 2008, but started only in January 2009. We find that without the pre-announcement the cumulative increase in output and inflation would be about 30% and 34% smaller.

**Related Literature.** Firstly, this paper relates to a strand of theoretical literature analyzing macroeconomic effects of unconventional monetary policy in response to financial market disturbances. In a model, in which financial intermediation bears real resource costs, [Curdia and Woodford \(2011\)](#) find that under severe financial distress asset purchases may be beneficial, while apart from that they play no role for stabilization policy, even for a binding ZLB. [Gertler and Karadi \(2011\)](#) specify a macroeconomic model with endogenously leverage constrained banks and find that direct central bank lending is beneficial during a financial crisis, particularly, at the ZLB. [Gertler and Karadi \(2013\)](#) extend this model to allow for purchases of both government bonds and private securities and conclude that purchases of the latter are more effective, which relates to our conclusion. In a model with segmented bond markets, [Chen et al. \(2012\)](#) find small effects of purchases of long-term government debt relating to our findings with regard to long-term government bonds, which would be even smaller without a binding ZLB. Unlike these papers, where the central bank directly creates loans for private agents, [Hoermann and Schabert \(2015\)](#) specify central bank asset purchases in secondary markets. They analytically show that the size as well as the composition of the central bank’s balance sheet can exert macroeconomic effects, while the effects depend on the scarcity of eligible assets and hence are more pronounced during a crisis. Our analysis most closely relates to [DEFK17](#), whose quantitative macroeconomic model builds upon [Kiyotaki and Moore \(2019\)](#). [DEFK17](#) show that an adverse shock to the resaleability of assets is able to replicate the large economic downturn during the financial crisis and to make the ZLB binding for several quarters. They further show that in the absence of asset purchases the negative effects of the crisis would have been even larger depending on the expected duration of the ZLB episode. [Woodford \(2016\)](#) examines the impact of purchases of long-term treasuries by the central bank on financial stability via banks’ incentives to issue short-term risky debt. Our paper differs from these studies along several dimensions. First, the existing papers analyze the effects of central bank purchases of treasuries and/or corporate bonds and do not account for mortgage loans or MBS, whereas our focus exactly lies on the specific effects and transmission mechanisms of MBS purchases. Second, we use time series models to closely replicate observed paths of asset purchases. Third, we consider shocks to intermediation costs as the source of the adverse effects

in 2008 and 2009, which accords to [Ajello \(2016\)](#).

Secondly, there is a voluminous empirical literature on the effects of LSAPs that this paper uses to discipline its analysis. The first wave of empirical work analyzing LSAPs, like [KVJ11](#) and [Hancock and Passmore \(2011\)](#), focused on their yield effects, concluding that LSAPs reduced yields of purchased assets. An early example of empirical work relating spread effects to macroeconomic effects is [Walentin \(2014\)](#), who finds that a mortgage rate spread reduction similar to what [KVJ11](#) find increased GDP by 0.8%, consumption by 0.7%, and house prices by 1.1% during QE1. However, as the analysis abstracts from the ZLB, these numbers have to be considered as lower bounds. [Weale and Wieladek \(2016\)](#) provide estimates for the effects of QE1 on GDP and inflation and find an increase of 1.4% in GDP and of 1.5% in inflation. In a recent wave, empirical studies highlight the importance of the bank lending channel in transmitting the effects of LSAPs to the macroeconomy and, thereby, set out why considering MBS purchases in particular is important to correctly assess the macroeconomic effects of QE1. First, [RD17](#) and [Kurtzman et al. \(2020\)](#) show that LSAPs, especially MBS purchases, increased bank lending. In particular, they find that banks with larger MBS holdings increased lending in response to QE1 and QE3, which comprised MBS purchases, but not in response to QE2, which only consisted of treasury purchases. Second, it is shown that increased bank lending in response to LSAPs increased employment (see [Luck and Zimmermann, 2020](#)) and consumption (see [Di Maggio et al., 2019](#)). Our model is able to replicate all of these empirical findings at least qualitatively, while most of them are even met quantitatively.

Third, and finally, our paper relates to a strand of recent literature showing that accounting for household heterogeneity is on the one hand important to determine the overall effects of monetary (and fiscal) policy correctly, and on the other hand crucial for understanding the underlying mechanisms (see e.g. [Kaplan et al., 2018](#)). [Kaplan et al. \(2018\)](#) split the effects of monetary policy on consumption into direct effects, the partial equilibrium effect of the change in the policy rate, like the intertemporal substitution effect, and indirect effects, that occur in general equilibrium due to changes in disposable income. They show that in representative agent New Keynesian (NK) models direct effects dominate indirect effects, while in heterogeneous agent NK models the opposite is true. In our two-agent NK framework patient households behave according to the permanent income hypothesis and impatient households are borrowing constrained and very sensitive to transitory income changes. Hence, LSAPs have different effects on different types of households. For patient households the intertemporal substitution effect leading to a consumption increase is central, and the indirect labor income effect plays a minor role, whereas for constrained impatient households, direct effects are less relevant and indirect effects via bank lending are crucial.

The remainder of the paper is organized as follows. In section 2, the model is described. In section 3, we present our calibration strategy and the crisis scenario triggered by the banking cost shock. Moreover, we simulate asset purchases and particularly MBS purchases and discuss their



effects during QE1. Finally, we compare MBS purchases to purchases of treasuries and discuss the role of the Fed pre-announcements in our model. Section 4 concludes.

## 2 The Model

We follow [Kiyotaki and Moore \(1997\)](#) and consider two types of agents, patient and impatient ones. Intermediation between these two types is conducted by competitive banks which collect deposits from (patient) savers and grant loans to (impatient) borrowing households. We assume that debt contracts are not enforceable and are collateralized by housing (see [Iacoviello, 2005](#)); the supply of the latter being fixed. We assume that mortgage loans can be traded in a frictionless way, such that they are equivalent to mortgage-backed securities (MBS) in this model. Given that the rates in the primary and secondary market for mortgage debt are identical, MBS price effects of central bank interventions are fully passed through to the loan rate. This simplifying assumption is supported by empirical evidence, in particular, by [Fuster et al. \(2017\)](#). The treasury issues one-period and multi-period bonds which are held by financial intermediaries and the central bank. Following [Hoermann and Schabert \(2015\)](#), we assume that the central bank supplies money only against eligible assets, here, treasuries and MBS. The central bank sets the policy rate and can further control the amount of money supplied against eligible assets, e.g. it can increase the supply of reserves by purchasing treasuries or MBS. For the simulation of the financial crisis and a binding ZLB, we apply shocks that render financial intermediation more costly.

### 2.1 Households

There is a continuum of households of mass 1 consisting of two types, patient ones indexed with  $p$ , who represent a share of  $0 < s < 1$  of total population, and impatient ones indexed with  $i$  (and share  $1 - s$ ). They only differ with regard to their subjective discount factors:  $1 > \beta^p > \beta^i > 0$ . Both types of households derive utility from consumption  $c_{*,t}$ , housing  $h_{*,t}$  and disutility from labor  $n_{*,t}$  ( $* = i, p$ ) and maximize the expected sum of discounted utility

$$E_0 \sum_{t=0}^{\infty} (\beta^*)^t \cdot u(c_{*,t}, h_{*,t}, n_{*,t}), \quad (1)$$

where  $\beta^p$  is the discount factor for patient and  $\beta^i$  for impatient households. We assume that the instantaneous utility function is separable in all arguments, strictly concave, increasing in housing and consumption, and decreasing in working time. The total stock of housing is assumed to be constant.

**Patient Households.** A patient household  $p$  enters a period  $t$  with deposits  $D_{p,t-1}$  held at financial intermediaries and real housing  $h_{p,t-1}$ . Neglecting borrowing from financial intermediaries

(which will not occur in equilibrium), its budget constraint is given by

$$P_t c_{p,t} + P_t p_{h,t} (h_{p,t} - h_{p,t-1}) + D_{p,t} / R_t^D = D_{p,t-1} + P_t w_t n_{p,t} + P_t \tau_{p,t} + P_t \delta_{p,t}, \quad (2)$$

where the left hand side contains expenditures for consumption,  $P_t c_{p,t}$ , and housing,  $P_t p_{h,t} h_{p,t}$ , with the real house price  $p_{h,t}$ , and new holdings of deposits  $D_{p,t}$  at the price  $1/R_t^D$ , while the right hand side shows deposits from the preceding period as well as labor income,  $P_t w_t n_{p,t}$ , lump-sum transfers/taxes,  $P_t \tau_{p,t}$ , and profits of firms, retailers, and banks,  $P_t \delta_{p,t}$ , due to the assumption that patient households are the owners of those. A patient household chooses the values of  $c_{p,t}$ ,  $h_{p,t}$ ,  $n_{p,t}$  and  $d_{p,t} = D_{p,t}/P_t$  to maximize (1) subject to (2), leading to the first order conditions

$$u'(h_{p,t}) = p_{h,t} u'(c_{p,t}) - \beta^p E_t u'(c_{p,t+1}) p_{h,t+1}, \quad (3)$$

$$-u'(n_{p,t}) = w_t u'(c_{p,t}), \quad (4)$$

$$\frac{1}{R_t^D} = \beta^p E_t \frac{u'(c_{p,t+1})}{u'(c_{p,t}) \pi_{t+1}}, \quad (5)$$

where  $u'(h_{p,t})$ ,  $u'(c_{p,t})$ , and  $u'(n_{p,t})$  denote the marginal utilities of housing, consumption and working time, and an associated transversality condition. Equation (3) describes housing demand of a patient household. In the optimum, marginal utility of current housing equals marginal utility of foregone consumption at the price of housing  $p_{h,t}$  less the discounted marginal utility of next period's expected consumption  $\beta^p E_t u'(c_{p,t+1}) p_{h,t+1}$  achieved from selling the house at the expected price. Equation (4) describes labor supply of a patient household and (5) is the optimality condition for holdings of deposits.

**Impatient Households.** Since an impatient household  $i$  values current consumption more than a patient one, it will be a borrower in equilibrium. We assume that its debt is non-enforceable and is collateralized by housing. A household  $i$  can borrow from intermediaries in nominal terms an amount  $B_{i,t}^M / R_t^L < 0$  in period  $t$  and pays back  $B_{i,t}^M$  in period  $t + 1$ , where  $R_t^L$  is the gross nominal interest rate on these loans. We follow [Kiyotaki and Moore \(1997\)](#) and assume that borrowing is limited by a (fraction) of the expected value of housing at the beginning of the subsequent period when the loan matures

$$B_{i,t}^M \geq -\phi E_t P_{t+1} p_{h,t+1} h_{i,t}, \quad (6)$$

where  $\phi$  denotes the (exogenously given) pledgeable fraction of housing. An impatient household  $i$  enters a period  $t$  with mortgage debt  $B_{i,t-1}^M < 0$  and real housing  $h_{i,t-1}$ . It has expenditures for consumption,  $P_t c_{i,t}$ , and housing,  $P_t p_{h,t} h_{i,t}$ , faces transfers/taxes,  $P_t \tau_{i,t}$ , earns labor income  $P_t w_t n_{i,t}$ , and borrows by issuing mortgage loans  $B_{i,t}^M / R_t^L$ . Neglecting deposits held at financial intermediaries (which would never occur in equilibrium), the budget constraint of an impatient

household  $i$  reads

$$P_t c_{i,t} + P_t p_{h,t} [h_{i,t} - h_{i,t-1}] + B_{i,t}^M / R_t^L = B_{i,t-1}^M + P_t w_t n_{i,t} + P_t \tau_{i,t}. \quad (7)$$

An impatient household  $i$  chooses the values of  $c_{i,t}$ ,  $h_{i,t}$ ,  $n_{i,t}$ , and  $b_{i,t}^M = B_{i,t}^M / P_t$  to maximize (1) subject to the collateral constraint (6) and the budget constraint (7) leading to the first order conditions

$$u'(h_{i,t}) = u'(c_{i,t}) p_{h,t} - \beta^i E_t u'(c_{i,t+1}) p_{h,t+1} - \omega_t \phi E_t \pi_{t+1} p_{h,t+1}, \quad (8)$$

$$-u'(n_{i,t}) = w_t u'(c_{i,t}), \quad (9)$$

$$\frac{u'(c_{i,t})}{R_t^L} = \beta^i E_t \frac{u'(c_{i,t+1})}{\pi_{t+1}} + \omega_t, \quad (10)$$

where  $\omega_t$  denotes the multiplier on the collateral constraint (6), and the complementary slackness conditions  $\omega_t (b_{i,t}^M + \phi E_t \pi_{t+1} p_{h,t+1} h_{i,t}) = 0$ ,  $b_{i,t}^M + \phi E_t \pi_{t+1} p_{h,t+1} h_{i,t} \geq 0$ , and  $\omega_t \geq 0$ . Equation (8) describes housing demand of an impatient household. Here, the additional term  $\omega_t \phi E_t \pi_{t+1} p_{h,t+1}$ , indicates that housing has an additional value as collateral for loans for impatient agents. Equation (9) describes the labor supply decision of an impatient household and (10) describes the demand for debt.

## 2.2 Banks

There is a continuum of identical perfectly competitive banks of mass 1 indexed with  $b$ . A bank  $b$  receives deposits from (patient) households, holds money  $M_{b,t}^H$  and government bonds. It holds short-term government bonds  $B_{b,t}$  (T-bills) with an interest rate  $R_t^G$  and long-term (multi-period) government bonds  $B_{b,t}^{LT}$ , which are traded at the price  $q_t^{LT}$  in  $t$  and deliver a payoff  $p_{t+1}^{LT}$  in  $t+1$ . Long-term bonds are modeled as perpetuities with coupon payments that exponentially decay at the rate  $\rho \in (0, 1)$ . Banks supply collateralized (mortgage) loans at the loan rate  $R_t^L$ . We assume that mortgage loans can be frictionlessly traded, such that they are equivalent to *mortgage backed securities* (MBS) traded at a price that equals the inverse of the loan rate. Notably, the implied full pass through of price effects in the secondary market for mortgage debt is consistent with empirical evidence of Fuster et al. (2017), who find an approximately full pass-through of price effects in the secondary market to the primary market, of QE-related monetary policy measures<sup>8</sup>. Banks face costs of managing loans, for which we consider a stylized cost function  $\Xi_t$ , following

<sup>8</sup>Concretely, they find that "on average, a one dollar change in the MBS price leads to a 92 cent change in the rebate paid to the borrower" (see Fuster et al., 2017).

Curdia and Woodford (2011). Bank  $b$ 's budget constraint is given by

$$\begin{aligned} P_t \pi_{b,t}^B + D_{b,t-1} + \frac{B_{b,t}}{R_t^G} + q_t^{LT} B_{b,t}^{LT} + \frac{B_{b,t}^M}{R_t^L} + M_{b,t}^H + I_{b,t} (R_t^m - 1) + P_t \Xi(z_t^\Xi, b_{b,t}^M, m_{b,t}^T) \quad (11) \\ = \frac{D_{b,t}}{R_t^D} + B_{b,t-1} + p_t^{LT} B_{b,t-1}^{LT} + B_{b,t-1}^M + M_{b,t-1}^H. \end{aligned}$$

where  $b_{b,t}^M = B_{b,t}^M/P_t$ ,  $m_{b,t}^T = M_{b,t}^T/P_t$  and  $\pi_{b,t}^B$  denotes its profits. The term  $I_{b,t}(R_t^m - 1)$  in (11) denotes costs associated with the acquisition of new central bank money  $I_{b,t}$ , as the central bank discounts eligible assets at the rate  $R_t^m$  (see below). To capture costs of providing financial intermediation, we introduce an ad-hoc cost function  $\Xi(z_t^\Xi, b_{b,t}^M, m_{b,t}^T)$ , similar to Curdia and Woodford (2011). This function on the one hand captures the costs associated with loan creation, such that it is an increasing function of the volume of loans  $\partial \Xi_t / \partial b_{b,t}^M > 0$ . Further accounting for the specific role of central bank money for the settlement of banks' transactions and liquidity management, banking costs are assumed to be decreasing in holdings of total reserves, i.e.  $\partial \Xi_t / \partial m_{b,t}^T < 0$  where  $M_{b,t}^T = M_{b,t-1}^H + I_{b,t}$ . Moreover, the banking costs satisfy  $\partial(\partial \Xi_t / \partial b_{b,t}^M) / \partial m_{b,t}^T < 0$  and  $\partial(\partial \Xi_t / \partial m_{b,t}^T) / \partial b_{b,t}^M > 0$ , such that the marginal costs of loans decrease with reserves and the marginal gains of reserves decrease with loans. Notably, banking costs further depend on the stochastic component  $z_t^\Xi$ , which will serve as a shock that induces sufficiently severe effects to replicate main macroeconomic outcomes at the onset of the recent financial crisis.

Both types of bank assets, i.e. treasuries and MBS, are assumed to be in principle eligible and can, therefore, be used to get new reserves from the central bank. In accordance with the Fed's pre-crisis money supply regime, we assume that short-term treasuries are in general eligible. Additionally, following QE1 practice, we consider purchases of MBS and/or long-term bonds. The central bank further sets the price of money in terms of eligible assets  $R_t^m$ , which serves as the policy rate. Notably, the federal funds rate was almost identical to the rate on treasury repurchase agreements before the financial crisis, see e.g. Bech et al. (2012).<sup>9</sup> New money injections  $I_{b,t}$  that a bank receives from the central bank depend on the amount of eligible assets that the bank holds at the beginning of the period (see right-hand side of (11)). In particular, these injections are limited by the following money supply constraint

$$I_{b,t} \leq (1 + \epsilon_t^i) \frac{B_{b,t-1}}{R_t^m} + (z_t^{LT} - 1) \frac{p_t^{LT} B_{b,t-1}^{LT}}{R_t^m} + (z_t - 1) \frac{B_{b,t-1}^M}{R_t^m}, \quad (12)$$

where  $\epsilon_t^i$ ,  $z_t$  and  $z_t^{LT}$  are determined by the central bank to conduct the QE1 program. Below we will describe in detail how the stochastic process for  $z_t$  is specified to match the size and the time pattern of the Fed's MBS purchases and how  $z_t^{LT}$  is calibrated to replicate the long-term bond

<sup>9</sup>Precisely, the average spread between the Fed's treasury repo rate and the federal funds is smaller than one bps.

purchases during QE1.<sup>10</sup> The term  $\epsilon_t^i$  is further fitted to match the whole size of the QE1 program, which further consists of temporary money supply under liquidity facilities and a small fraction of agency debt purchases. In the steady state, we set  $z = z^{LT} = 1$  and  $\epsilon^i = 0$  such that only short-term government bonds are eligible, in accordance with the US Fed's pre-crisis regime.

A bank  $b$  maximizes the present value of future profits  $\max E_0 \sum_{k=0}^{\infty} \vartheta_{t,t+k} \pi_{b,t+k}^B$  subject to its budget constraint (11) and the money supply constraint (12), where  $\vartheta_{t,t+k}$  denotes the stochastic discount factor of banks. The first order conditions with respect to deposits, short and long-term government bonds, MBS, money holdings and injections are given by

$$\frac{1}{R_t^D} = E_t \frac{\vartheta_{t,t+1}}{\pi_{t+1}}, \quad (13)$$

$$\frac{1}{R_t^G} = \frac{1}{R_t^D} \left( 1 + E_t \eta_{t+1} \frac{1 + \epsilon_{t+1}^i}{R_{t+1}^m} \right), \quad (14)$$

$$q_t^{LT} = E_t \frac{p_{t+1}^{LT}}{R_t^D} \left( 1 + \eta_{t+1} \frac{z_{t+1}^{LT} - 1}{R_{t+1}^m} \right), \quad (15)$$

$$\frac{1}{R_t^L} = \frac{1}{R_t^D} \left( 1 + E_t \eta_{t+1} \frac{z_{t+1} - 1}{R_{t+1}^m} \right) - \frac{\partial \Xi_t}{\partial b_{b,t}^M}, \quad (16)$$

$$1 = \frac{1}{R_t^D} - E_t \vartheta_{t,t+1} \frac{\partial \Xi_{t+1}}{\partial m_{b,t}^H}, \quad (17)$$

$$R_t^m = 1 - \frac{\partial \Xi_t}{\partial i_{b,t}} - \eta_t, \quad (18)$$

where  $\vartheta_{t,t+1} = \vartheta_{t,t+k+1}/\vartheta_{t,t+k}$  and  $\eta_t$  denotes the multiplier on (12), and the complementary slackness conditions  $\eta_t \{ [((1 + \epsilon_t^i) b_{b,t+k-1} + (z_{t+k}^{LT} - 1) p_t^{LT} b_{b,t+k-1}^{LT} + (z_{t+k} - 1) b_{b,t+k-1}^M) / (\pi_{t+k} R_{t+k}^m)] - i_{b,t+k} \} = 0$ ,  $[((1 + \epsilon_t^i) b_{b,t+k-1} + (z_{t+k}^{LT} - 1) p_t^{LT} b_{b,t+k-1}^{LT} + (z_{t+k} - 1) b_{b,t+k-1}^M) / (\pi_{t+k} R_{t+k}^m)] - i_{b,t+k} \geq 0$ , and  $\eta_t \geq 0$ , where  $b_{b,t}^{(M,LT)} = B_{b,t}^{(M,LT)} / P_t$ ,  $m_{b,t}^H = M_{b,t}^H / P_t$ , and  $i_{b,t} = I_{b,t} / P_t$ . Note that the stochastic discount factor of banks will in equilibrium equal the one of patient households (see 5 and 13). The interest rates on deposits  $R_t^D$ , bonds  $R_t^G$  and loans  $R_t^L$  are related as follows. When the money supply constraint (12) is not binding,  $\eta_t = 0$ , the interest rates on deposits and bonds are identical:  $R_t^D = R_t^G$ . Otherwise, the treasury rate is lower,  $R_t^G < R_t^D$ , due to a liquidity premium, i.e. due to the property of short term government bonds to serve as a substitute for central bank money. When MBS are not eligible ( $z_t = 1$ ), the loan rate further exceeds the deposit rate,  $R_t^L > R_t^D$ , since it increases with the marginal costs of banks  $\partial \Xi_t / \partial b_{b,t}^M$ . When MBS purchases are announced and MBS become eligible, i.e. if  $E_t z_{t+1} > 1$ , the loan rate tends to be lower, provided that the money supply constraint is expected to be binding,  $E_t \eta_{t+1} > 0$  (see 16). Equation (17) describes optimal holdings of money and the optimality conditions for new money (18) shows that the money supply constraint is binding when the marginal (negative) effect of injections on banking costs is

<sup>10</sup>Note that since the Fed only purchased *Agency* MBS in the program, the term  $(z_t - 1)$  will be measured by *Agency* MBS purchased by the Fed as share of total *Agency* MBS outstanding.

sufficiently large,  $\eta_t > 0 \Leftrightarrow 1 - R_t^m > \frac{\partial \Xi_t}{\partial i_{b,t}}$ .

### 2.3 Firms

A continuum of perfectly competitive identical firms indexed with  $j$  produce the intermediate good according to  $IO_{j,t} = (n_{j,t}^T)^\alpha$ , where  $\alpha \in (0, 1)$ . The firm hires labor  $n_{j,t}^T$  at a common rate  $w_t$  to produce its output  $IO_{j,t}$ , which it sells to the retailers at the price  $P_{J,t}$ . Hence a firm  $j$  solves  $\max P_{J,t}(n_{j,t}^T)^\alpha - P_t w_t n_{j,t}^T$  leading to the first order condition  $P_{J,t} \alpha (n_{j,t}^T)^{\alpha-1} = P_t w_t$  and to profits of  $(1 - \alpha) P_{J,t} (n_{j,t}^T)^\alpha$  that are distributed to the patient households, which own these firms.

There is further a continuum of monopolistically competitive retailers indexed with  $k$  who buy intermediate goods at the price  $P_{J,t}$ , re-package them according to  $IO_t = \int_0^1 IO_{j,t} dj$ , differentiate them into  $y_{k,t} = IO_{k,t}$  and sell the distinct goods  $y_{k,t}$  at the price  $P_{k,t}$  to perfectly competitive bundlers. They bundle them to the final good  $y_t^{\frac{\epsilon-1}{\epsilon}} = \int_0^1 y_{k,t}^{\frac{\epsilon-1}{\epsilon}} dk$ , where  $\epsilon > 1$ , which is sold at the price  $P_t$ . Hence a retailer  $k$  faces the demand function  $y_{k,t} = (P_{k,t}/P_t)^{-\epsilon} y_t$  and sets its own price  $P_{k,t}$  accordingly taking  $P_{J,t}$  as given. We assume that each period only a fraction  $1 - \theta$  of retailers is allowed to change their price. The other fraction  $\theta \in [0, 1)$  adjusts the price according to full indexation to the steady state inflation rate:  $P_{k,t} = \pi P_{k,t-1}$ . Defining  $\tilde{Z}_t = P_{k,t}^*/P_t$  with the price of retailers  $P_{k,t}^*$ , optimal price setting satisfies  $\tilde{Z}_t = \frac{\epsilon}{\epsilon-1} Z_{1,t}/Z_{2,t}$ , with  $Z_{1,t} = c_{p,t}^{-1} y_t m c_t + \theta \beta^p E_t \left( \frac{\pi_{t+1}}{\pi} \right)^\epsilon Z_{1,t+1}$  and  $Z_{2,t} = c_{p,t}^{-1} y_t + \theta \beta^p E_t \left( \frac{\pi_{t+1}}{\pi} \right)^{\epsilon-1} Z_{2,t+1}$ .

Due to perfectly competitive bundlers the aggregate price level  $P_t$  for final goods is given by  $P_t^{1-\epsilon} = \int_0^1 P_{k,t}^{1-\epsilon} dk$ , implying  $1 = (1 - \theta) \tilde{Z}_t^{1-\epsilon} + \theta \left( \frac{\pi_t}{\pi} \right)^{\epsilon-1}$ . Aggregate output is given by  $y_t = (n_t^T)^\alpha / v_t$  where  $v_t = \int_0^1 (P_{k,t}/P_t)^{-\epsilon} dk$  is a measure of price dispersion, which can be written recursively as  $v_t = (1 - \theta) \tilde{Z}_t^{-\epsilon} + \theta \left( \frac{\pi_t}{\pi} \right)^\epsilon v_{t-1}$  and where total labor demand equals total labor supply:  $n_t^T = \int_0^1 n_{j,t}^T dj = s n_{p,t} + (1 - s) n_{i,t}$ . Profits of intermediate goods producing firms and retailers that are distributed to patient households are collected in the term  $P_t \delta_{p,t}$ .

### 2.4 Public Sector

The treasury issues short (one-period) and long-term (multi-period) bonds. As in [Hoermann and Schabert \(2015\)](#), we assume that short-term bonds are supplied according to a constant growth rate  $B_{T,t} = \Gamma B_{T,t-1}$ , where  $\Gamma > \beta^p$  is the growth rate of total short-term government bonds, which are held by financial intermediaries and the central bank. Further, we assume that long-term debt is issued in form of perpetuities with exponentially decaying coupon payments. The rate of decay is given by  $\rho \in (0, 1)$ . Note that, bonds issued in period  $t - s$  and  $\rho^s$  bonds issued in  $t$  are equivalent, which is why we assume – without loss of generality – that all long-term debt is of one type implying that the government redeems all old bonds in each period. Hence, a perpetuity issued in period  $t$  at the price  $q_t^{LT}$  pays out  $1 + \rho E_t q_{t+1}^{LT}$  in period  $t + 1$ , such that  $E_t p_{t+1}^{LT} = 1 + \rho E_t q_{t+1}^{LT}$ .

The budget constraint of the government reads

$$B_{T,t-1} + (1 + \rho q_t^{LT}) B_{t-1}^{LT} + P_t \tau_t = (B_{T,t}/R_t^G) + q_t^{LT} B_t^{LT} + P_t \tau_t^m,$$

where  $P_t \tau_t^m$  are seigniorage revenues received from the central bank and  $P_t \tau_t$  lump-sum transfers to households, which are assumed to be identical for both types,  $\tau_{p,t} = \tau_{i,t}$ . To ensure solvency, the government is assumed to follow a fiscal rule, similar to [DEFK17](#):

$$\tau_t - \tau = \psi \cdot ([b_{T,t-1} + (1 + \rho q_t^{LT}) b_{t-1}^{LT}] \pi_t^{-1} - [b_T + (1 + \rho q^{LT}) b^{LT}] / \pi),$$

where variables without time subscript are the associated steady state values and  $\psi > 0$  governs the response of taxes to debt.

The central bank supplies money in regular open market operations either outright or temporarily via repos against short-term bonds (T-bills),  $M_t^H = \int_0^1 M_{b,t}^H db$  and  $M_t^R = \int_0^1 M_{b,t}^R db$ , where  $M_{b,t}^H - M_{b,t-1}^H + M_{b,t}^R \leq B_{b,t-1}/R_t^m$ , for each individual bank  $b$ . The central bank can further increase the supply of money by purchases of long-term government bonds or MBS (using  $z_t^{LT}$  or  $z_t$ , respectively). The remaining part of the QE1 program, which mainly consists of a temporary money supply under various liquidity facilities as well as a small fraction of agency debt purchases, are – for convenience – modeled as additional repos against T-bills (see  $\epsilon_t^i$  in [12](#)).

New money injections by the central bank in each period are given by  $\int_0^1 I_{b,t} db = I_t = M_t^H - M_{t-1}^H + M_t^R + I_t^{LT} + I_t^{MBS} + I_t^\epsilon$ , where  $I_t^{LT}$  and  $I_t^{MBS}$  denote money supplied against long-term bonds and MBS,  $I_t^{LT} \leq \int_0^1 (z_t^{LT} - 1)(p_t^{LT} B_{b,t-1}^{LT}/R_t^m) db$ , and  $I_t^{MBS} \leq \int_0^1 (z_t - 1)(B_{b,t-1}^M/R_t^m) db$  and where  $I_t^\epsilon = \epsilon_t^i \int_0^1 B_{b,t-1}/R_t^m db$  (see [12](#)). With its earnings from money supply operations, the central bank budget constraint reads

$$B_{C,t}/R_t^G + P_t \tau_t^m = B_{C,t-1} + M_t^H - M_{t-1}^H + (R_t^m - 1)(M_t^H - M_{t-1}^H + M_t^R + I_t^{LT} + I_t^{MBS} + I_t^\epsilon),$$

where  $B_{C,t}$  denotes central bank holdings of T-bills. We assume that the central bank transfers all its earnings from asset holdings and money supply facilities,

$$P_t \tau_t^m = (1 - 1/R_t^G) B_{C,t} + (R_t^m - 1) I_t,$$

to the treasury. Thus, we get the following relationship between the evolution of assets held and money supplied by the central bank  $M_t^H - M_{t-1}^H = B_{C,t} - B_{C,t-1}$ . Assuming that initial assets and liabilities satisfy,  $M_{-1}^H = B_{C,-1}$ , the balance sheet of the central bank reads

$$M_t^H = B_{C,t}.$$

Finally, total reserves in each period are given by  $M_t^T = M_t^H + M_t^R + I_t^{LT} + I_t^{MBS} + I_t^\epsilon$ , or equivalently, by  $M_t^T = M_{t-1}^H + I_t = M_{t-1}^H + M_t^H - M_{t-1}^H + M_t^R + I_t^{LT} + I_t^{MBS} + I_t^\epsilon$ . The policy rate is set by the

central bank following a feedback rule respecting the ZLB

$$R_t^m = \max\{1, (R_{t-1}^m)^{\rho_R} (R^m)^{1-\rho_R} (\pi_t/\pi)^{\rho_\pi(1-\rho_R)} (y_t/y)^{\rho_y(1-\rho_R)}\},$$

where variables without time index denote steady state values,  $1 > \rho_R \geq 0$ ,  $\rho_\pi \geq 0$  and  $\rho_y \geq 0$ . Given that we do not model real growth and that there is thus no trend in real money demand (that would have to be accommodated by an increasing outright money supply), the central bank sets the ratio of money supplied under repos to money supplied outright against T-bills according to  $M_t^R = \Omega M_t^H$ , which ensures non-negative injections in equilibrium.

## 2.5 Equilibrium

In equilibrium, agents' optimal plans are satisfied and prices adjust such that all markets clear. Specifically, the market clearing conditions for aggregate output  $y_t = \Xi_t + s \cdot c_{p,t} + (1-s)c_{i,t}$ , housing  $H = s \cdot h_{p,t} + (1-s)h_{i,t}$ , where  $H$  denotes the fixed housing supply, deposits  $\int_0^1 D_{b,t} db = sD_{p,t}$ , loans  $\int_0^1 B_{b,t}^M db = (s-1)B_{i,t}^M$ , and treasury securities  $B_{T,t} = \int_0^1 B_{b,t} db + B_{C,t}$  hold. Notably, asset purchases will be non-neutral, if the money supply constraint (12) is binding, i.e. if  $\eta_t = -(\partial \Xi_t / \partial i_{b,t}) - (R_t^m - 1) > 0$  (see 18), which requires a sufficiently large marginal reduction of banking cost by additional reserves. This will be the case when we simulate the financial crisis, where banks liquidity demand is particularly high. Further note that the term,  $R_t^m - 1$ , equals zero when the policy rate is at the ZLB. For a scenario where the money supply constraint (12) is non-binding,  $\eta_t = 0$ , the conditions (17) and (18) imply that the deposit rate  $R_t^D$  equals the expected policy rate up to first order,  $R_t^D \approx E_t R_{t+1}^m$ . In the subsequent analysis, we will however focus on a situation where the economy faces a financial crisis, such that reserves and eligible asset are scarce and the money supply constraint (12) is binding even for a policy rate at the ZLB,  $R_t^m = 1$  (see Hoermann and Schabert, 2015, for further details). A definition of a competitive equilibrium is given in Appendix 5.1.

## 2.6 Effects of Asset Purchases

Before carrying out our quantitative analysis, in this section we will illustrate the transmission mechanisms for purchases of both types of assets, treasuries and MBS, which will also answer the question why MBS purchases have larger effects than treasury purchases.

In our model, banks intermediate funds from patient households to impatient ones and the treasury. Hence, to understand the transmission mechanisms, we have to understand the reactions of different agents. When a bank holds government securities, it lends funds to the treasury; when it holds mortgages, it lends funds to private households. Hence, asset purchases alter borrowing costs of the government on the one hand and of private agents on the other hand. Consider banks' first order conditions related to yields that are directly affected by purchases of short-term



treasuries<sup>11</sup>, (14), and MBS, (16). Purchases of treasuries and MBS tend to reduce the treasury rate and the MBS yields, respectively. If  $E_t(1 + \epsilon_{t+1}^i) = E_t(z_{t+1} - 1)$ , abstracting from banking costs,  $R_t^G$  and  $R_t^L$  will fall by the same amount. Taking the impact of the monetary expansion on the marginal costs of loans into account (see last term in 16), the reduction in  $R_t^L$  will be larger than the reduction in  $R_t^G$ . Hence, MBS purchases have a stronger impact on the loan rate than treasury purchases on the treasury rate. Note that the deposit rate  $R_t^D$  and, thus, patient households are not directly affected by asset purchases. On the other hand, higher borrowing costs of the government  $R_t^G$  can be compensated by lump-sum taxation. Yet, a higher loan rate  $R_t^L$  directly affects borrowers' consumption. When  $R_t^L$  falls, borrowers increase their demand for loans and housing, which increases the housing price and the value of collateral. Equation (10) shows that for a binding borrowing constraint, i.e.  $\omega_t > 0$ <sup>12</sup>, the marginal rate of intertemporal substitution of impatient households exceeds the real loan rate. Hence, they increase current consumption at the expense future consumption until they hit their borrowing limit. To sum up, MBS purchases will reduce mortgage rates, alleviate the borrowing constraint, increase house prices and, thereby, enable constrained households to borrow more, which, in turn, will boost their demand due to a high marginal propensity to consume. These mechanisms drive the aggregate effects we will observe in the next section. In contrast, treasury purchases only matter by reducing banking costs via larger holdings of reserves. As MBS purchases affect spreads, bank lending, and house prices more than treasury purchases, i.e. their indirect effects are larger, they turn out to be more effective.

### 3 The Effects of MBS Purchases in QE1

In this section, we evaluate the Fed's QE1 program and within this program the role of MBS purchases applying the model developed in the previous section. QE1 was initiated at the onset of the financial crisis when the federal funds rate reached its ZLB and a large drop in GDP as well as an increase in MBS-treasury yield spreads was observed (see Fig. 1). Therefore, we first show that in our model a shock to the cost of financial intermediation is able to generate a crisis in the range of what has been observed while inducing the ZLB to be binding for several quarters. Second, given this crisis scenario, we study the effects of the full QE1 program and elaborate the special role of MBS purchases within this program. We further show that MBS purchases are more effective than purchases of long-term bonds. Finally, we analyze the effects of the Fed's announcements of MBS purchases. To derive a solution of the model with an occasionally binding ZLB, we compute the piecewise-linear perturbation solution suggested by [Guerrieri and Iacoviello \(2015\)](#).

<sup>11</sup>Here, we abstract from long-term treasuries, as the same arguments hold.

<sup>12</sup>As can be seen from (5) and (10), the borrowing constraint binds in the steady state for  $\beta^i$  sufficiently small, in particular,  $\beta^i < \pi/R^L$ . This is given in our calibration and we consider in our analyses shocks that are not capable of making the borrowing constraint slack.

The framework essentially features two channels by which MBS purchases affect the private sector behavior. As a precondition for the non-neutrality of central bank asset purchases at the ZLB, agents have to assign a positive value to the liquidity of eligible assets ( $\eta_t > 0$ ). As discussed in detail in [Hoermann and Schabert \(2015\)](#), this does not rely on a non-zero monetary policy rate  $R_t^m$  (see also (18)), such that liquidity premia also occur when the latter is at the ZLB. Given that the eligibility of assets tends to reduce the demanded interest rate (see (14) or (16)), the central bank influences, via the first channel, the price of the purchased asset, e.g. the MBS yield (and thus the loan rate) with MBS purchases or the long-term bond yield with purchases of long-term bonds. As the second channel, the central bank's increased supply of high powered money due to asset purchases of any type tends to reduce the banks' costs and thereby the loan rate (see (16) with  $\partial(\partial \Xi_t / \partial b_{b,t}^M) / \partial m_{b,t}^T < 0$ ). Thus, both channels tend to stimulate lending and real activity, while the effects of MBS purchases are relatively more pronounced (than the effects of treasuries purchases), since they affect the loan rate directly by the first channel.

### 3.1 Calibration

We use standard parameter values whenever it is possible and set the remaining parameters at values that allow matching selected targets. Specifically, we apply time series processes for the Fed's MBS purchase programs and set the parameters of the processes using detailed information of the actual Fed's MBS purchases. Further, the parameters of the banking cost function are set such that the model replicates unconditional moments of MBS yields as well as the estimated effects of QE1 on the spread between MBS yields and long-term bond yields reported by [KVJ11](#).

One time period is assumed to be a quarter. To calculate the long run values, we use quarterly US data from the FRED database for the time period 1990Q1 to 2008Q3, excluding data of the recent financial crisis. The reason for not applying earlier data is that the housing finance system and the mortgage market has been greatly restructured in the 80's. The total housing stock is normalized to  $H = 1$  and the supply side parameters are set at standard values  $\alpha = 2/3$ ,  $\epsilon = 21$ , and  $\theta = 0.75$  (see e.g. [Iacoviello, 2005](#)). The inflation rate, the policy rate, and the treasury rate are set at the empirical sample means for 1990Q1-2008Q3, leading to  $\pi - 1 = 0.46\%$ ,  $R^m - 1 = 1.06\%$ , and  $R^G - 1 = 1.09\%$  per quarter. As discussed above, the loan rate  $R^L$  is assumed to equal the MBS yield. Given that we do not model the mark-up of loan rates over MBS yields (see [Figure 1](#)), we set  $R^L$  to the sample mean of the Fannie Mae 30-year current-coupon MBS yields implying a quarterly rate of  $R^L - 1 = 1.68\%$ .<sup>13</sup> We calibrate the discount factor of patient households to achieve a real interest rate of 3.4% per annum<sup>14</sup>, implying  $\beta^p = 1/1.034^{1/4} \approx 0.9917$ . Given that the steady state deposit rate satisfies  $R^D = \pi/\beta^p$  (see (5)), this implies  $R^D - 1 = 1.3\%$  per quarter.

<sup>13</sup>See [Appendix 5.2](#) for further details on the data and their sources.

<sup>14</sup>We calculate the real interest rate as the average of the sample means of the deflated returns on 3-month and 30-year treasuries for 1990Q1-2008Q3, which implies a real interest rate of 3.4% p.a..

**Table 1: Baseline Parameter Calibration.**

Description	Source/Target	Parameter	Value
Discount factor patient households	real rate of 3.4%	$\beta^p$	0.9917
Discount factor impatient households	Iacoviello (2005)	$\beta^i$	0.95
Production elasticity	Iacoviello (2005)	$\alpha$	2/3
Elasticity of substitution	Iacoviello (2005)	$\epsilon$	21
Price rigidity	Iacoviello (2005)	$\theta$	0.75
Pledgeable fraction of housing	$b_b^M/y = 0.93$	$\phi$	0.8961
Share of patient households	Kaplan et al. (2014)	$s$	2/3
Weight of housing in utility	$p_h/y = 6.8$	$\gamma^h$	0.0658
Weight of labor in utility	$n^T = 1/3$	$\gamma^n$	6.0231
Banking cost function	$R^L - 1 = 1.68\%$ p.q.	$\kappa$	0.0085
Banking cost function	path of obs. MBS yields	$\iota$	0.159

*Notes:* Summary of calibration of most relevant parameters. For remaining parameters, see text.

The value for the discount factor of impatient households  $\beta^i$  is taken from Iacoviello (2005),  $\beta^i = 0.95$ . The fraction of impatient and thus constrained consumers is set at 1/3, i.e.  $s = 2/3$ , which is the preferred estimate of Kaplan et al. (2014) for the share of hand-to-mouth consumers in the US. We use the following specification of the utility function

$$u(c_{*,t}, h_{*,t}, n_{*,t}) = \log c_{*,t} + \gamma^h \log h_{*,t} - \gamma^n n_{*,t}^2/2, \quad (19)$$

where  $*$  =  $i, p$ . The parameters  $\gamma^n$  and  $\gamma^h$  are calibrated such that total hours worked in the steady state is  $n^T = 1/3$  and housing wealth to quarterly GDP equals  $p_h/y = 6.8 = 4 \cdot 1.7$  as the sample mean of total housing wealth to annual GDP is 1.7, implying  $\gamma^n = 6.0231$  and  $\gamma^h = 0.0658$ . To account for the relative size of MBS purchases, we consider the sample mean of total Agency MBS outstanding to annual GDP of 23.25% and set the pledgeable fraction of housing  $\phi$  such that  $b_b^M/y$  equals  $4 \cdot 0.2325$ . This leads to a value of  $\phi = 0.8961$ , which closely relates to corresponding values in related studies, e.g. 0.9 in Guerrieri and Iacoviello (2017). Further, following its empirical counterpart prior to the crisis, total government debt in real terms is assumed to equal 60% of annual GDP in the steady state and the parameters of the policy rate rule are set to standard values:  $\rho_R = 0.75$ ,  $\rho_\pi = 2$ ,  $\rho_y = 0.15$ . Following DEFK17 we set the tax rule parameter to  $\psi = 0.1$  and the decay rate of coupon payments is set to  $\rho = 0.967$  implying a duration of long-term bonds of 30 quarters as in Chen et al. (2012). The parameter  $\Omega$  that governs the share of money supplied in repos against T-bills is set such that the steady state reserves to GDP ratio of 0.2% is matched, i.e.  $m_t^H/y = 4 \cdot 0.2\%$  implying  $\Omega = 31.9009$ .

Regarding the banking cost function, which closely relates to the one applied in Curdia and

Woodford (2011), we consider the following functional form

$$\Xi_t = z_t^\Xi \kappa \left( \frac{b_{b,t}^M}{m_{t-1}^H / \pi_t + i_t} \right)^\iota,$$

where  $z_t^\Xi$  is a banking cost shock satisfying  $\log z_t^\Xi = \rho_\Xi \log z_{t-1}^\Xi + \varepsilon_t^\Xi$  with  $\varepsilon_t^\Xi \sim n.i.d. (0, \sigma_\Xi^2)$  and  $0 < \rho_\Xi < 1$  and where  $m_t^T = m_{t-1}^H / \pi_t + i_t$ . The parameters of the cost function,  $\kappa > 0$  and  $\iota > 0$ , are set as follows. We calibrate the level parameter  $\kappa$  to match average MBS yields between 1990Q1 and 2008Q3, i.e. such that in the steady state  $R^L - 1 = 1.68\%$  is matched. The elasticity of banking costs with respect to the ratio of loans to reserves  $\iota$  is set such that KVJ11's estimates of QE1 effects on the spread between MBS yields and treasury yields are matched.<sup>15</sup> Translated into quarterly spreads, they find that in 2008Q4 the spread between 30 year MBS yields and 30 year treasury yields fell by 7 bps and in 2009Q1 by 8.5 bps. These empirical findings are shown with blue x marks in Figure 5. The value for  $\iota$  is set such that the difference between the model implied spread and these empirical findings is minimized. The resulting parameter values for the banking cost function are  $\kappa = 0.0085$  and  $\iota = 0.159$ , which implies a drop in the spread of 5.6 bps in 2008Q4, 1.4 bps less than the corresponding estimate of 7, and of 9.9 in 2009Q1, 1.4 bps above the corresponding estimate of 8.5. This calibration of the banking cost function is also consistent with Philippon (2015), who studies costs of financial intermediation and finds that the unit cost of financial intermediation is quite stable between 1886 and 2012 with a mean of 1.87%<sup>16</sup> Our calibration implies a unit cost of  $\Xi/b_b^M = 2.1\%$  in the steady state. The baseline calibration is summarized in Table 1.

### 3.2 Simulating the Fed's Large Scale Asset Purchases

In this section, we describe how we specify asset purchases during QE1. For this, we first describe how we approximate the MBS purchase program and afterwards how the remaining part of QE1 purchases is simulated. Given that MBS purchases were conducted after a short pre-announcement period, we model the MBS purchases as announced changes in the instrument  $z_t$ . In accordance with the implementation lag of one period, we specify the policy intervention as a shock that is observed in the announcement period  $\varepsilon_t > 0$  and affects the instrument in period  $t + 1$  but not in period  $t$ . Thus, we allow for agents' responses in the announcement period, even without any changes in the fraction of purchased MBS. The choice of the particular time series models for the instrument  $z_t$  is guided by the actual announcements and implementation of US Fed MBS purchases.

<sup>15</sup>In fact, the effects of MBS purchases found by KVJ11 are quite close to the estimates of Hancock and Passmore (2011), who only consider MBS in their analysis. The reason for choosing KVJ11 as reference is that they also consider treasuries of same maturity, which enables us to get the spread between MBS and treasuries from one source.

<sup>16</sup>The mean for our time period considered is not reported but tends to be slightly higher.

Based on the first announcement of QE1, we define the period 2008Q4 as the first quarter of QE1.<sup>17</sup> Total purchases at the end of the QE1 program actually exceeded the initially announced volume of \$500 billion, as the US Fed expanded the program after several months. Specifically, in March 2009, the Fed announced an expansion by purchasing "up to an additional \$750 billion of agency mortgage-backed securities" (FOMC, 2009). To approximate the actual MBS purchases during QE1, given by the black dashed line in the left panel of Figure 3, we therefore consider two time series processes for  $z_t$ , an initially announced part (labeled with  $A$ ) and the expansion (labeled with  $B$ ). In accordance with the initial announcement regarding the volume and the duration ("expected to take place over several quarters", see Fed, 2008), we approximate part  $A$  by an AR(1) process given by

$$\log z_t^A = \rho^A \log z_{t-1}^A + \varepsilon_{t-1}^A,$$

where  $\varepsilon_1^A = 0.047$  such that the initial purchase equals the observed one. The coefficient of autocorrelation is set at  $\rho^A = 0.54$  such that this part of the program in isolation leads to significant purchases over six quarters adding up to 10% of total US Agency MBS outstanding (which made up about \$500 billion in 2008Q4) in line with the initial announcement. This process  $A$  is depicted by the dotted line with circles in the left panel of Figure 3.

For the second part of the program that was announced at the end of 2009Q1 (labeled with  $B$ ), we assume that actual purchases started in the subsequent quarter, namely 2009Q2, implying again a one-period implementation lag. We consider a second process to approximate the actual purchases from 2009Q2 to 2010Q2, given the AR(1) process of the first part. Specifically, we model part  $B$  as an AR(2) process given by

$$\log z_t^B = \rho_1^B \log z_{t-1}^B + \rho_2^B \log z_{t-2}^B + \varepsilon_{t-1}^B,$$

with  $\varepsilon_2^B = 0.0195$ ,  $\rho_1^B = 1.45$ , and  $\rho_2^B = -0.6$ . The process  $B$  is shown by the dotted line with crosses in the left panel of Figure 3. In total, the announcements and implementation of MBS purchases during QE1,  $z_t$ , are specified as the sum of the two processes given by

$$\log z_t = \log z_t^A + \log z_t^B,$$

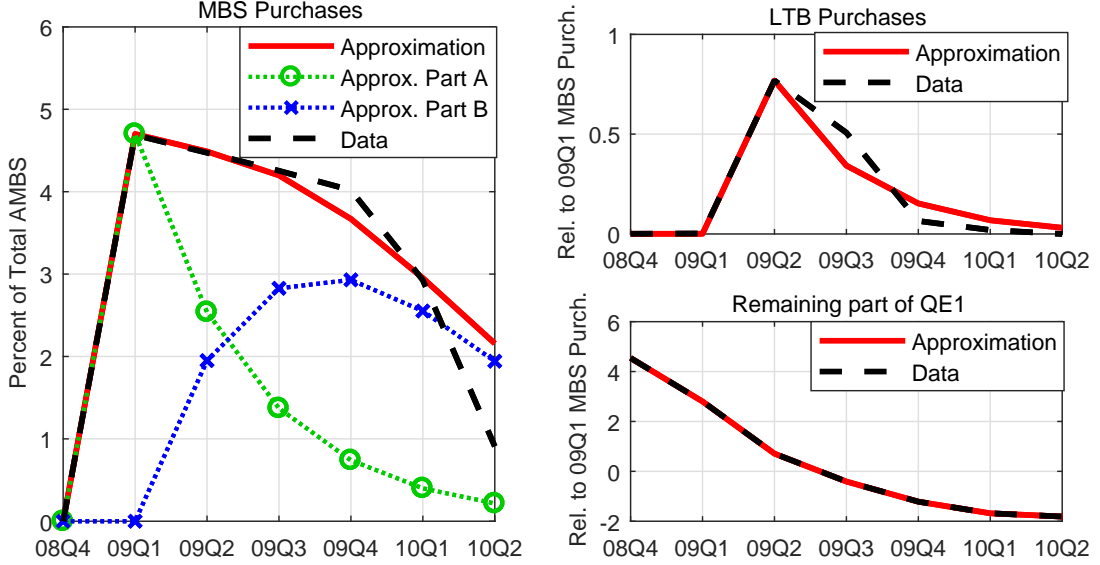
which is depicted by the solid line in the left panel of Figure 3 and closely approximates the observed purchases (dashed line) in a sufficient way.

Long-term bond purchases during QE1 are simulated with an AR(1) process following

$$\log z_t^{LT} = \rho^{LT} \log z_{t-1}^{LT} + \varepsilon_{t-1}^{LT},$$

---

<sup>17</sup>Table 2 in Appendix 5.3 shows the MBS purchases of the Fed in billions of dollars as well as relative to total Agency MBS outstanding during QE1.



**Figure 3: Approximation of QE1.**

*Notes:* Left: MBS purchases during QE1 in percent of total US Agency MBS outstanding (black dashed line) and its approximation by  $z_t$  (red solid line),  $z_t^A$  (green circled dotted line) and  $z_t^B$  (blue crossed dotted line). Top right: Long-term bond purchases relative to 2009Q1 MBS purchases (black dashed line) and its approximation by  $z_t^{LT}$  (red solid line). Bottom right: Remaining elements of QE1 (relative to 2009Q1 MBS purchases, black dashed line) and their approximation through  $\epsilon_t^i$  (red solid line).

where  $\varepsilon_2^{LT} = 0.016$  such that the initial purchase in 2009Q2 relative to MBS purchases in 2009Q1 equals the observed one, i.e.  $\frac{\$182bn}{\$237bn} \approx 0.77$ . The coefficient of autocorrelation is set at  $\rho^A = 0.445$  such that total long-term treasury purchases sum up to the observed volume until 2010Q2, as can be seen in the top-right panel of Figure 3. We simulate the remaining part of QE1 by the choice of  $\epsilon_t^i$  (see (12)) to approximate other components of QE1. Precisely, QE1 can be separated into outright MBS and long-term bond purchases, other outright purchases, like purchases of agency debt, and non-outright liquidity facilities, like the Term Asset-Backed Securities Loan Facility (TALF). Following DEFK17, we normalize the latter to 0 in 2008Q3 and consider the increase of these facilities during QE1. The dashed line in the bottom-right panel of Figure 3 shows the sum of other outright purchases and non-outright liquidity facilities. In each period  $\epsilon_t^i$  is set to approximate this part of QE1 exactly, as illustrated in the bottom-right panel of Figure 3. Concretely, the first impulse is set to a value such that injections through these facilities are 4.54 times ( $\frac{\$1076bn}{\$237bn}$ ) as large as injections in 2009Q1 through MBS purchases ( $\epsilon_1^i = 0.8567$ ).

### 3.3 Financial Crisis and Zero Lower Bound

The first quantitative easing program (QE1) was implemented during the financial crisis, where output and inflation dropped and the policy rate hit the ZLB for the first time. Therefore, we implement – like DEFK17 – the breakout of the crisis and the announcement of the intervention

within the same period, namely 2008Q4, which corresponds to period 1 in the simulations. In this subsection, we show that the banking cost shock  $z_t^{\Xi}$  is able to generate a crisis in our model that closely replicates the economic situation when QE1 was announced.

Before turning to our crisis scenario, consider first the effects of a small banking costs shock. To illustrate how this shock affects macroeconomic aggregates, the impulse response functions for a one percent increase in banking costs are given in Figure 8 in Appendix 5.4. In sum, the banking cost shock reduces banks' loan supply and increases MBS yields, which lead to a fall in house prices. Reduced lending, higher rates on loans, and the drop in the value of their collateral, worsen the borrowing conditions of impatient households, such that these households demand less consumption goods and housing. In total, the shock has contractionary effects on output and consumption as well as on wages and inflation. These reactions are similar to the ones described in Ajello (2016), who suggests this type of shock as the major impulse that triggered the financial crisis.

As DEFK17, we aim at replicating the output path at the onset of the financial crisis as well as the length of the ZLB period. In addition, we account for the spread between the yields of MBS and treasuries as a relevant financial market statistic to assess the predictive power of the model. For this, we have three parameters at our disposal, the size of the impulse  $\varepsilon_1^{\Xi}$  and the autocorrelation  $\rho_{\Xi}$  of the banking cost shock, and the elasticity of banking costs with respect to the ratio of loans to reserves  $\iota$ . As mentioned earlier, we set  $\iota$  to match the initial reactions of the MBS and treasury yields to QE1 as identified by KVJ11. Further, we set the impulse  $\varepsilon_1^{\Xi}$  to replicate the observed drop in output and  $\rho_{\Xi}$  to achieve a binding ZLB period for several quarters.<sup>18</sup>

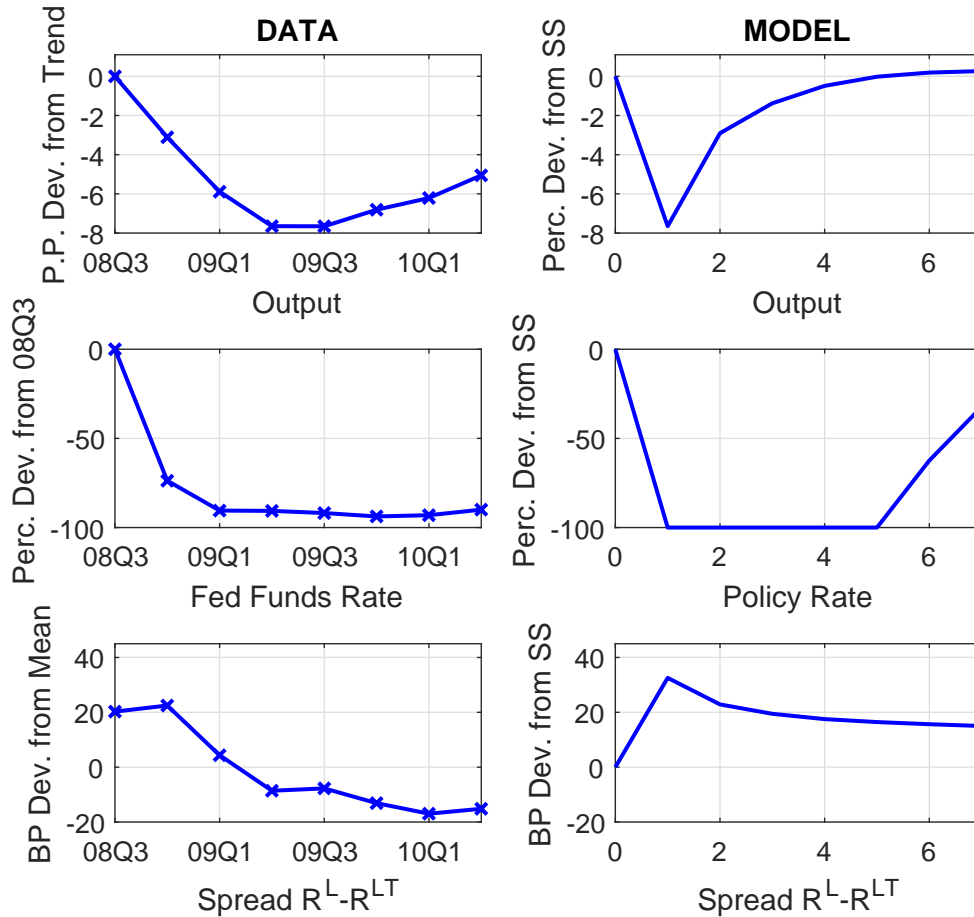
Figure 4 shows our crisis scenario and compares it to the evolution of selected variables in the data (see left column). The right column of Figure 4 shows the evolution of the corresponding variables in our simulation based on a scenario with the full QE1 intervention approximated by  $z_t^{LT}$ ,  $z_t$  and  $\epsilon_t^i$  as described in section 3.2, i.e. it replicates the situation as it was with crisis and intervention. The maximum drop of output in the data is  $-7.65\%$  and is observed in the third quarter of the intervention, i.e. 2009Q2. In the simulation, we replicate this maximum drop in GDP, while it occurs already in the first quarter of the intervention, i.e. 2008Q4, and is less persistent.<sup>19</sup> Further, with respect to the MBS-treasury spread our scenario replicates the timing (maximum increase in 2008Q4), while it slightly overestimates its maximum hike. While in the data the spread deviates from its mean by 22.5 bps in 2008Q4, in the model the deviation is 32.6 bps from its steady state value.<sup>20</sup> Finally, the duration of the ZLB episode is 5 quarters in

<sup>18</sup>The banking cost shock that leads to the scenario in Figure 4 has the impulse of  $\varepsilon_0^{\Xi} = 0.4655$  and autocorrelation of  $\rho_{\Xi} = 0.948$ .

<sup>19</sup>Our crisis scenario approximates the drop in GDP more closely than DEFK17, whose simulation accounts for 56% of it. As DEFK17, we can not replicate the hump-shaped reaction of output in the data.

<sup>20</sup>The empirical spread is measured as the (quarterly) Fannie Mae 30-year current coupon MBS yields minus the





**Figure 4: Comparison of output, the federal funds rate, and the MBS-Treasury yield spread during QE1.**

*Notes:* Left: Data on output in perc. point deviations from trend (following DEFK17), the federal funds rate in perc. dev. from 2008Q3, and the spread between 30 year MBS yields and 30 year treasury yields in bps dev. from mean. Right: Model implied paths of the corresponding variables in perc. dev. from steady state for output and the policy rate and in bps dev. from steady state for the spread.

our simulation, one quarter less than the ZLB episode that DEFK17 consider for their baseline specification and which is in the range of what Gust et al. (2017) estimate for the expected ZLB duration at that time. In sum, our crisis scenario replicates the core variables during the crisis reasonably well.

### 3.4 Effects of QE at the Zero Lower Bound

In this section, we present quantitative results regarding the macroeconomic effects of the approximated Fed's QE1 program and examine the specific role of MBS purchases within this program. The analysis is conducted separately for the full QE1 program and for just MBS purchases of the QE1 program, where we treat the policy interventions as realization of distinct specifications of 30 year constant maturity treasury yields. As seen in Figure 1, the mortgage rate would imply a larger spread.



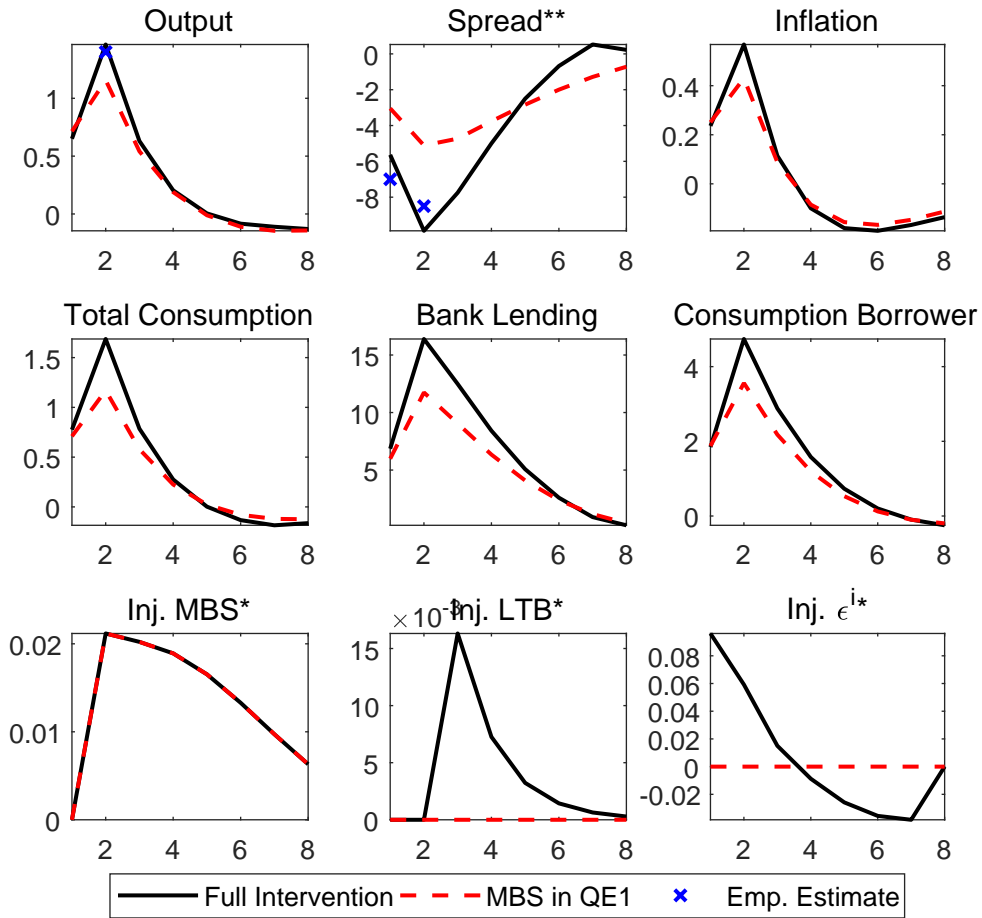
data generating processes for the particular policy instruments  $z_t^{LT}$ ,  $z_t$ , and  $\epsilon_t^i$ . Further, we conduct counterfactual analyses that show how the effects would be if the outright purchases consisted of purchases of long-term bonds or MBS exclusively. Finally, we study the role of pre-announcement of MBS purchases.

### 3.4.1 Benchmark Analysis: Full QE1 vs. MBS Only

Our crisis scenario described in section 3.3 provides responses of macroeconomic variables replicating the economic situation including the central bank intervention. To identify the macroeconomic effects of the Fed’s QE1 program and the MBS purchases within it, we compute in a counterfactual analysis responses of the same variables to the same crisis shock, but without the monetary policy intervention. We then compute the difference between both responses, i.e. responses including and excluding the policy intervention, which reveals how QE1 has affected macroeconomic variables at the ZLB. This difference between actual and counterfactual response is shown in Figure 5. Put differently, Figure 5 shows the isolated effects stemming from QE1. In particular, the black solid lines show the effects of the full QE1 program and the red dashed lines the effects of MBS purchases within QE1. The bottom row shows the injections through the different instruments and replicates Figure 3.

First of all, our results indicate that the full QE1 program increased GDP (relative to the crisis scenario without intervention) by about 0.65% and reduced the MBS-treasury yield spread by 5.6 bps in 2008Q4, while in 2009Q1 output increased by 1.47% and the spread fell by 9.9 bps. As indicated by the blue x marks, our calibration implies that output and spread effects match the targeted empirical estimates, which find that QE1 increased output by 1.4% (see [Weale and Wieladek, 2016](#)) and reduced the spread by 7 and 8.5 bps in the first two quarters of the intervention (see [KVJ11](#)). Moreover, we find that the full QE1 program increased inflation by 0.24% in 2008Q4 and by 0.57% in 2009Q1. This means that without QE1 the drop in output and inflation in 2008Q4 would have been 8.5% and 5.4% larger and in 2009Q1 more than 50% and 37% larger. These results closely relate to [DEFK17](#), who find for their baseline scenario that the contraction in output (peak in 2009Q1) would have been 36% and the drop in inflation (peak in 2008Q4) 40% larger without interventions. Thus, compared to [DEFK17](#), our analysis implies larger output effects and smaller inflation effects, which might be at least partially due to the property that supply-side (demand-side) borrowers specifically benefit from the central bank intervention in [DEFK17](#) (our model). Cumulating the effects over 4 quarters (2008Q4-2009Q3), we get a cumulative increase in GDP by 3% and inflation by 0.82% for the full QE1 program. The cumulative effects indicate that without the Fed’s intervention the drop in output would have been about 24%, in inflation about 12%, and in bank lending about 25% larger.

Regarding the effects of isolated MBS purchases within QE1, Figure 5 shows that even in



**Figure 5: Effects of Full QE1 Program and MBS Purchases only.**

*Notes:* Black solid lines show effects of the full QE1 program, while red dashed lines show effects of MBS purchases in isolation. The lines show isolated effects of central bank interventions in terms of percentage deviations, except for starred variables showing level deviations and double-starred ones showing bps deviations. Blue x marks show targeted empirical estimates of QE1 effects on the corresponding variable.

the first quarter of the intervention (2008Q4), where MBS purchases were announced but not yet conducted, they increased GDP by 0.71% and inflation by 0.25%. In 2009Q1, MBS purchases in isolation increased GDP by 1.16% and inflation by 0.43%, which make up more than 75% of the increase in GDP and inflation. Moreover, for the horizon of 1 year, our results indicate that 88% of the cumulative increase in GDP, 84% of the cumulative increase in inflation, 75% of the cumulative increase in bank lending, and almost 60% of the cumulative increase in the spread can be attributed to MBS purchases. Notably, MBS purchases contributed to roughly the half of the entire QE1 program (see Figure 2). Hence, we can conclude that MBS purchases were clearly more effective than the other elements of QE1 (see also below).

The main effects of LSAPs, and in particular of MBS purchases, in our model, which are

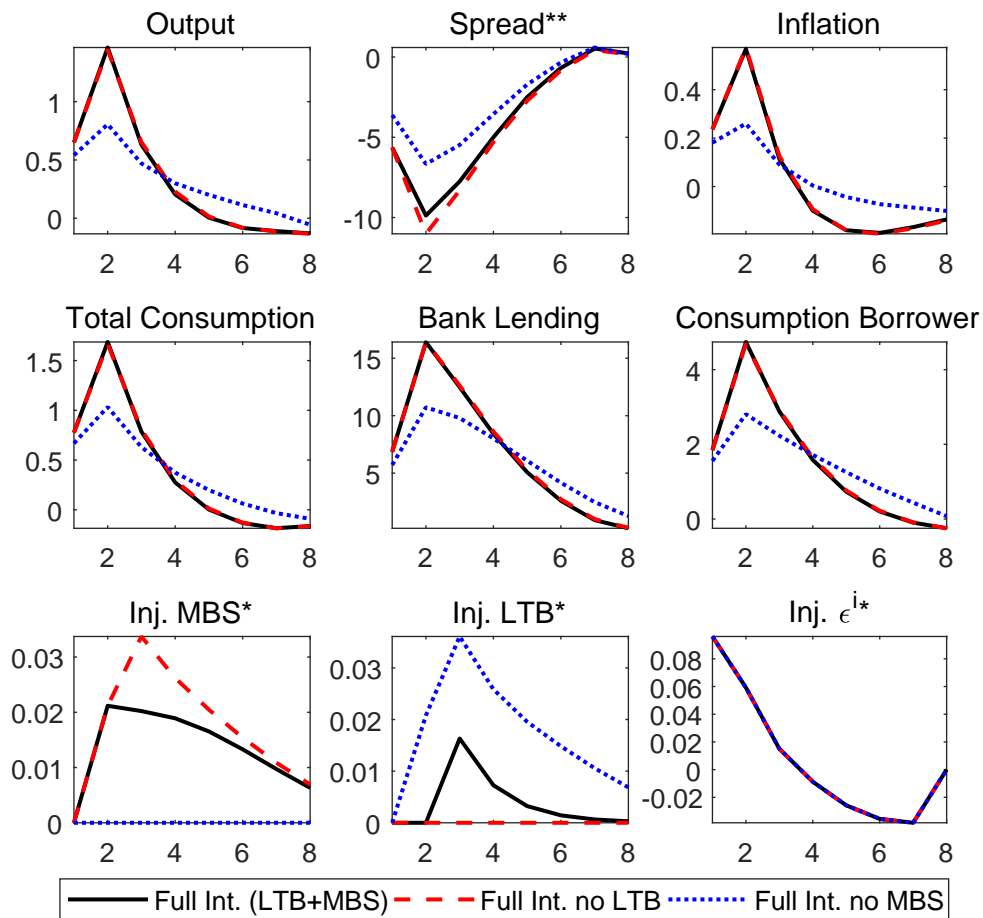
supported by various empirical studies, can be summarized as follows: MBS purchases lead to a reduction in MBS yields (see [KVJ11](#)) and mortgage rates as they reduce the costs of financial intermediation and they increase bank lending (see [RD17](#)). The fall in mortgage rates together with the increase in lending leads to an increase in housing demand which raises house (collateral) prices (see [Walentin, 2014](#)) and induces a relaxation of the collateral constraint of impatient households (with a relatively higher marginal propensity to consume). Hence, they increase their borrowing and thereby their consumption and housing, which stimulates aggregate demand such that employment (see [Luck and Zimmermann, 2020](#)), output, and inflation (see [Weale and Wieladek, 2016](#)) rise. Moreover, borrowers benefit from debt deflation since the increased money supply leads to a rise in inflation. As the deposit rate also decreases with lower banking costs, patient households' intertemporal substitution also contributes to the increase in current GDP.

### 3.4.2 Counterfactual Analysis: Purchases of MBS vs. Government Bonds

In our benchmark analysis, MBS purchases provide the largest effects of the full QE1 program, despite constituting just about 50% of the overall QE1 program, indicating that MBS purchases are particularly more effective than treasury purchases.<sup>21</sup> This provides a novel result on QE1, which has up to now been overlooked, as most theoretical studies on QE1 only consider one type of asset to be purchased by the central bank (see, e.g., [DEFK17](#)) and have so far neglected MBS. In this section, we show that MBS purchases are more effective than treasury purchases and why it is important to account for the composition of QE1.

In our benchmark analysis we modeled purchases of public and private securities to approximate QE1 as precise as possible. In the following counterfactual analyses, we hold the liquidity facilities part of QE1 approximated by  $\epsilon_t^i$  fixed and specify the remaining part of QE1 either by MBS or long-term treasuries only, i.e. we either consider the instrument  $z_t^{LT}$  or  $z_t$ . In the first case, we abstract from MBS purchases and model the observed MBS purchases through long-term bond purchases. In the second case, we instead assume that all QE1 asset purchases were conducted in terms of MBS. The results of these analyses are shown in [Figure 6](#). The black solid line shows our benchmark analysis with purchases of both types of securities. The blue dotted line shows the results for the first counterfactual purchase program where all QE1 asset purchases are assumed to be conducted in terms of long-term treasuries (which is achieved by setting  $z_t = z = 1$  shutting down MBS purchases and by a compensating adjustment of  $z_t^{LT}$ ). The red dashed line shows the results for the second counterfactual purchase program in which QE1 asset purchases are assumed to be only conducted in terms of MBS (for which  $z_t^{LT} = z^{LT} = 1$  and  $z_t$  is adjusted accordingly). The bottom row of [Figure 6](#) illustrates that total injections are identical in both cases, as the blue dotted line in the middle panel coincides with the red dashed line in the left panel and vice versa,

<sup>21</sup>This finding relates to the results of [Gertler and Karadi \(2013\)](#), who find that, compared to treasuries, purchases of private securities have larger effects.



**Figure 6: Effects of QE1 and of counterfactual interventions.**

*Notes:* Red dashed lines show purchases of QE1 exclusively conducted in terms of MBS and blue dotted lines show purchases of QE1 exclusively conducted in terms of long-term treasuries. The lines show percentage deviations, except for starred variables showing level deviations and double-starred ones showing bps deviations.

while the lines in the right panel are identical.

Given identical injections, what are the differences in total effects? If the total volume of QE1 was spent on long-term treasuries only, the output (inflation) effects of the intervention would have been 17% (23%) smaller in 2008Q4 and even 45% (54%) smaller in 2009Q1. The one-year cumulated effects indicate a 28% (35%) smaller output (inflation) effect. The cumulated effects on the MBS-treasury spread and bank lending would have been 32% and 22% lower. In contrast, when only MBS were purchased in QE1, the output (inflation) effects of the intervention would have been identical in 2008Q4, as long-term bonds purchases were announced in 2009Q1, and would be only slightly larger afterwards due to the relatively small size of observed long-term bond purchases. Notably, the MBS-treasury spread shows the most substantial effect if only MBS

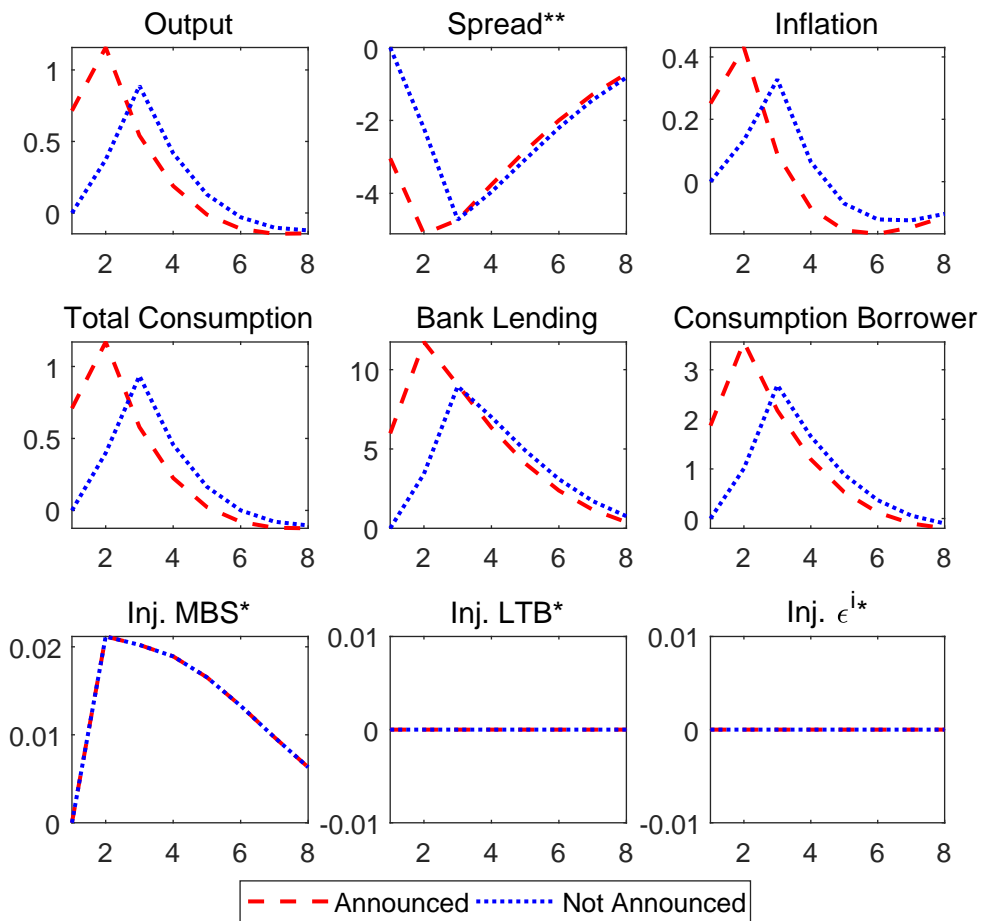
were purchased, which reflects the direct price effect of asset purchases. Hence, if QE1 were only conducted in terms of treasury securities in the model, one would underestimate its effects by about 30%. Notably, pure long-term treasury purchases lead to much smaller spread responses than pure MBS purchases (36% smaller in period 1 and 39% in period 2), given that they tend to directly lower the treasury yield and reduce the MBS yield only indirectly by the increase in money supply. In total, MBS purchases are more effective in improving borrowing conditions and bank lending, and thereby real activity and inflation, than an equally sized purchase program in terms of treasuries.

### 3.4.3 The Role of Pre-announcements

In this final section, we demonstrate that the pre-announcement of purchases can already exert substantial macroeconomic effects. Specifically, we analyze the effects of this pre-announcement by looking at the counterfactual scenario that generates the effects of the same MBS purchase program without pre-announcement (abstracting from other parts of QE1 by setting  $z_t^{LT} = z^{LT} = 1$  and  $\epsilon_t^i = 0$ ). In Figure 7, the red dashed lines show the effects of pre-announced MBS purchases within QE1 as it was considered before and the blue dotted lines show the effects of the same MBS purchase program if it were conducted without pre-announcement. As the bottom row indicates, injections are identical in both simulations, in particular, MBS purchases are exactly alike.

Consider for example the shock process for what we labeled as part A of QE1 MBS purchases:  $\log z_t^A = \rho^A \log z_{t-1}^A + \epsilon_{t-1}^A$ , where we have set  $\epsilon_1^A = 0.047$ . This means that in 2008Q4 this shock is observed, but since  $z_t$  reacts with a delay, the purchase is made in 2009Q1. For the counterfactual scenario, we modify this such that  $z_t$  is affected contemporaneously by  $\epsilon_t$ :  $\log z_t^A = \rho^A \log z_{t-1}^A + \epsilon_t^A$ , where we now set  $\epsilon_2^A = 0.047$  implying that the initial purchase in 2009Q1 equals the observed one. The same is done for part B.

As one would expect, without pre-announcement the MBS purchase program has no effects in period 1 (2008Q4), and the MBS treasury yield spread starts to fall in period 2 and is almost identical to the case with a pre-announcement from period 3 onwards. The peak effect of the announced purchases reveals in 2009Q1, when purchases start and part B is announced. In contrast, if purchases were not pre-announced their maximum effect would be in 2009Q2, when purchases of part B start. The reason for this effect is that banks account for the possibility to liquidate today's mortgage debt in the next period, which tends to lower the mortgage rate (see 16) and thus increases bank lending already today. With the pre-announcement the maximum increase in output (inflation) is 1.16% (0.43%), whereas without announcement it is 0.89% (0.33%), which is more than 23% smaller. The cumulative effects for 1 year indicate a 30% smaller output and a 34% smaller inflation effect without pre-announcement. More importantly, with pre-announcement, the MBS purchase program was already effective in 2008Q4, without having conducted any MBS



**Figure 7: Pre-announcement effect.**

*Notes:* Red dashed lines show pre-announced MBS purchases, whereas blue dotted lines show a counterfactual scenario of MBS purchases without announcement. The lines show percentage deviations, except for starred variables showing level deviations and double-starred ones showing bps deviations.

purchase. Thus, the price effects of pre-announced MBS purchases contributed substantially to the overall stimulating effects of QE1 at the onset of the financial crisis.

## 4 Conclusion

This paper analyzes the Fed's purchases of mortgage-backed securities in QE1, which have so far been overlooked by the theoretical literature on unconventional monetary policy, despite the central role of mortgage debt in both, the outbreak of the crisis and the policy response. Specifically, we provide a quantitative analysis of the macroeconomic effects of the Fed's asset purchases and, in particular of its MBS purchases, during QE1.

We show that with an adverse shock to financial intermediation costs our model is able to replicate the observed paths of output, the MBS-treasury spread, and of the expected ZLB duration

at the beginning of the financial crisis. For the full QE1 program, we find that without the Fed's intervention the cumulative drop in output (for 2008Q4-2009Q3) would have been 24% larger. For the isolated MBS purchases within QE1, which constitute about the half of the entire QE1 program, we find that they contributed by more than 85% to the overall output effects, highlighting their particular importance. We further find that purchases of MBS were much more effective than purchases of long-term government bonds, and that the output effects would have been 30% smaller if all purchases were conducted in terms of treasuries. Moreover, we show that without the pre-announcement of QE1 the cumulative output effects of MBS purchases would have been reduced by 30%. In summary, MBS purchases played a predominant role in the QE1 program and have successfully stimulated aggregate demand, output and prices since they were more effective in reducing spreads and stimulating bank lending as also suggested by empirical evidence.

## References

- Ajello, A. (2016). Financial Intermediation, Investment Dynamics, and Business Cycle Fluctuations. *American Economic Review* 106, 2256–2303.
- Bech, M. L., E. Klee, and V. Stebunovs (2012). Arbitrage, Liquidity and Exit: the Repo and Federal Funds Markets before, during, and emerging from the Financial Crisis. Finance and Economics Discussion Series 2012-21, Board of Governors of the Federal Reserve System.
- Bernanke, B. (2008). Housing, Mortgage Markets, and Foreclosures. Speech at Fed Conference on Housing and Mortgage Markets, Federal Reserve. <http://www.federalreserve.gov/newsevents/speech/bernanke20081204a.htm>.
- Bernanke, B. (2012). FOMC Press Conference. Press Conference, Federal Reserve. <http://www.federalreserve.gov/mediacenter/files/FOMCpresconf20120913.pdf>.
- Bianchi, J. and S. Bigio (2017). Banks, Liquidity Management, and Monetary Policy. Staff Report 503, Federal Reserve Bank of Minneapolis.
- Chen, H., V. Curdia, and A. Ferrero (2012). The Macroeconomic Effects of Large-Scale Asset Purchase Programmes. *Economic Journal* 122, 289–315.
- Curdia, V. and M. Woodford (2011). The Central-Bank Balance Sheet as an Instrument of Monetary Policy. *Journal of Monetary Economics* 58, 54–79.
- Del Negro, M., G. Eggertsson, A. Ferrero, and N. Kiyotaki (2017). The Great Escape? A Quantitative Evaluation of the Fed’s Liquidity Facilities. *American Economic Review* 107, 824–857.
- Di Maggio, M., A. Kermani, and C. J. Palmer (2019). How Quantitative Easing Works: Evidence on the Refinancing Channel. *The Review of Economic Studies*.
- Federal Open Market Committee (2009). FOMC Statement. Press release, Federal Reserve. <http://www.federalreserve.gov/newsevents/press/monetary/20090318a.htm>.
- Federal Reserve (2008). Monetary Policy Release. Press release, Federal Reserve. <http://www.federalreserve.gov/newsevents/press/monetary/20081125b.htm>.
- Fuster, A., S. H. Lo, and P. S. Willen (2017). The Time-Varying Price of Financial Intermediation in the Mortgage Market. Staff Report 805, Federal Reserve Bank of New York.
- Gertler, M. and P. Karadi (2011). A Model of Unconventional Monetary Policy. *Journal of Monetary Economics* 58, 17–34.



- Gertler, M. and P. Karadi (2013). QE 1 vs. 2 vs. 3...: A Framework for Analyzing Large-Scale Asset Purchases as a Monetary Policy Tool. *International Journal of Central Banking* 9, 5–53.
- Guerrieri, L. and M. Iacoviello (2015). Occbin: A Toolkit to Solve Models with Occasionally Binding Constraints Easily. *Journal of Monetary Economics* 70, 22–38.
- Guerrieri, L. and M. Iacoviello (2017). Collateral Constraints and Macroeconomic Asymmetries. *Journal of Monetary Economics* 90, 28–49.
- Gust, C., E. Herbst, D. Lopez-Salido, and M. E. Smith (2017). The Empirical Implications of the Interest-Rate Lower Bound. *American Economic Review* 107, 1971–2006.
- Hancock, D. and W. Passmore (2011). Did the Federal Reserve’s MBS Purchase Program Lower Mortgage Rates? *Journal of Monetary Economics* 58, 498–514.
- Hancock, D. and W. Passmore (2015). How Does the Federal Reserve’s Large-Scale Asset Purchases (LSAPs) Influence Mortgage-Backed Securities (MBS) Yields and U.S. Mortgage Rates? *Real Estate Economics* 43, 855–890.
- Hoermann, M. and A. Schabert (2015). A Monetary Analysis of Balance Sheet Policies. *Economic Journal* 125, 1888–1917.
- Iacoviello, M. (2005). House Prices, Borrowing Constraints, and Monetary Policy in the Business Cycle. *American Economic Review* 95, 739–764.
- Kaplan, G., B. Moll, and G. L. Violante (2018). Monetary policy according to hank. *American Economic Review* 108, 697–743.
- Kaplan, G., G. L. Violante, and J. Weidner (2014). The Wealthy Hand-to-Mouth. *Brookings Papers on Economic Activity Spring 2014*, 77–138.
- Kiyotaki, N. and J. Moore (1997). Credit Cycles. *Journal of Political Economy* 105, 211–248.
- Kiyotaki, N. and J. Moore (2019). Liquidity, Business Cycles, and Monetary Policy. *Journal of Political Economy* 127, 2926–2966.
- Krishnamurthy, A. and A. Vissing-Jorgensen (2011). The Effects of Quantitative Easing on Interest Rates: Channels and Implications for Policy. *Brookings Papers on Economic Activity Fall 2011*, 215–287.
- Kurtzman, R. J., S. Luck, and T. Zimmermann (2020). Did QE Lead Banks to Relax Their Lending Standards? Evidence from the Federal Reserve’s LSAPs. *Journal of Banking and Finance*, forthcoming.

- Luck, S. and T. Zimmermann (2020). Employment Effects of Unconventional Monetary Policy: Evidence from QE. *Journal of Financial Economics* 135, 678–703.
- Philippon, T. (2015). Has the US Finance Industry Become Less Efficient? On the Theory and Measurement of Financial Intermediation. *American Economic Review* 105, 1408–38.
- Rodnyansky, A. and O. M. Darmouni (2017). The Effects of Quantitative Easing on Bank Lending Behavior. *The Review of Financial Studies* 30, 3858–3887.
- Walentin, K. (2014). Business Cycle Implications of Mortgage Spreads. *Journal of Monetary Economics* 67, 62–77.
- Weale, M. and T. Wieladek (2016). What are the Macroeconomic Effects of Asset Purchases? *Journal of Monetary Economics* 79, 81–93.
- Woodford, M. (2016). Quantitative Easing and Financial Stability. NBER Working Paper 22285, National Bureau of Economic Research.

## 5 Appendix

### 5.1 Equilibrium

**Definition 1** A rational expectations equilibrium is a set of sequences  $\{c_{p,t}, h_{p,t}, n_{p,t}, c_{i,t}, h_{i,t}, n_{i,t}, p_{h,t}, w_t, \pi_t, \omega_t, b_{i,t}^M, R_t^m, R_t^G, R_t^D, R_t^L, q_t^{LT}, p_t^{LT}, \eta_t, \Xi_t, b_t^M, m_t^H, m_t^T, m_t^R, \vartheta_{t,t+1}, i_t, i_t^{LT}, i_t^{MBS}, i_t^\epsilon, b_t, n_t^T, mc_t, \tilde{Z}_t, Z_{1,t}, Z_{2,t}, y_t, v_t, b_{T,t}, b_t^{LT}, \tau_t\}_{t=0}^\infty$  satisfying the optimality conditions of patient households

$$\gamma^h h_{p,t}^{-1} = p_{h,t} c_{p,t}^{-1} - \beta^p E_t c_{p,t+1}^{-1} p_{h,t+1}, \quad (20)$$

$$\gamma^n n_{p,t} = w_t c_{p,t}^{-1}, \quad (21)$$

$$1/R_t^D = \beta^p E_t (c_{p,t+1}^{-1} c_{p,t} \pi_{t+1}^{-1}), \quad (22)$$

impatient households

$$\gamma^h h_{i,t}^{-1} = c_{i,t}^{-1} p_{h,t} - \beta^i E_t c_{i,t+1}^{-1} p_{h,t+1} - \omega_t \phi E_t \pi_{t+1} p_{h,t+1}, \quad (23)$$

$$\gamma^n n_{i,t} = w_t c_{i,t}^{-1}, \quad (24)$$

$$c_{i,t}^{-1}/R_t^L = \beta^i E_t (c_{i,t+1}^{-1} \pi_{t+1}^{-1}) + \omega_t, \quad (25)$$

$$c_{i,t} + p_{h,t} [h_{i,t} - h_{i,t-1}] + b_{i,t}^M/R_t^L = b_{i,t-1}^M \pi_t^{-1} + w_t n_{i,t} + \tau_t, \quad (26)$$

$$b_{i,t}^M = -\phi E_t \pi_{t+1} p_{h,t+1} h_{i,t}, \text{ if } \omega_t > 0, \quad (27)$$

$$\text{or } b_{i,t}^M > -\phi E_t \pi_{t+1} p_{h,t+1} h_{i,t}, \text{ if } \omega_t = 0,$$

banks

$$1/R_t^D = E_t (\vartheta_{t,t+1}/\pi_{t+1}), \quad (28)$$

$$1/R_t^G = (1/R_t^D) (1 + E_t [\eta_{t+1} (1 + \epsilon_{t+1}^i)/R_{t+1}^m]), \quad (29)$$

$$q_t^{LT} = E_t [(p_{t+1}^{LT}/R_t^D) (1 + \eta_{t+1} (z_{t+1}^{LT} - 1)/R_{t+1}^m)], \quad (30)$$

$$1/R_t^L = (1/R_t^D) (1 + E_t [\eta_{t+1} (z_{t+1} - 1)/R_{t+1}^m]) - \partial \Xi_t / \partial b_t^M, \quad (31)$$

$$1 = (1/R_t^D) - E_t (\vartheta_{t,t+1} \partial \Xi_{t+1} / \partial m_t^H), \quad (32)$$

$$R_t^m = 1 - \partial \Xi_t / \partial i_t - \eta_t, \quad (33)$$

$$\Xi_t = z_t^\Xi \kappa (b_t^M / (m_{t-1}^H / \pi_t + i_t))^t \quad (34)$$

$$b_t^M = (s - 1) b_{i,t}^M, \quad (35)$$

$$\begin{aligned} & m_t^H - m_{t-1}^H \pi_t^{-1} + m_t^R = b_{t-1} (\pi_t R_t^m)^{-1}, \text{ if } \eta_t > 0, \\ \text{or } & m_t^H - m_{t-1}^H \pi_t^{-1} + m_t^R < b_{t-1} (\pi_t R_t^m)^{-1}, \text{ if } \eta_t = 0 \end{aligned} \quad (36)$$

$$\begin{aligned} & i_t^{LT} = (z_t^{LT} - 1) p_t^{LT} b_{t-1}^{LT} (\pi_t R_t^m)^{-1}, \text{ if } \eta_t > 0, \\ \text{or } & i_t^{LT} < (z_t^{LT} - 1) p_t^{LT} b_{t-1}^{LT} (\pi_t R_t^m)^{-1}, \text{ if } \eta_t = 0 \end{aligned} \quad (37)$$

$$\begin{aligned} & i_t^{MBS} = (z_t - 1) b_{t-1}^M (\pi_t R_t^m)^{-1}, \text{ if } \eta_t > 0, \\ \text{or } & i_t^{MBS} < (z_t - 1) b_{t-1}^M (\pi_t R_t^m)^{-1}, \text{ if } \eta_t = 0 \end{aligned} \quad (38)$$

$$\begin{aligned} & i_t^\epsilon = \epsilon_t^i b_{t-1} (\pi_t R_t^m)^{-1} \text{ if } \eta_t > 0, \\ \text{or } & i_t^\epsilon < \epsilon_t^i b_{t-1} (\pi_t R_t^m)^{-1} \text{ if } \eta_t = 0 \end{aligned} \quad (39)$$

firms

$$w_t = \alpha (n_t^T)^{\alpha-1} m c_t, \quad (40)$$

$$n_t^T = s n_{p,t} + (1-s) n_{i,t} \quad (41)$$

$$\tilde{Z}_t = \frac{\epsilon}{\epsilon-1} Z_{1,t}/Z_{2,t}, \quad (42)$$

$$Z_{1,t} = c_{p,t}^{-1} y_t m c_t + \theta \beta^p E_t (\pi_{t+1}/\pi)^\epsilon Z_{1,t+1}, \quad (43)$$

$$Z_{2,t} = c_{p,t}^{-1} y_t + \theta \beta^p E_t (\pi_{t+1}/\pi)^{\epsilon-1} Z_{2,t+1}, \quad (44)$$

$$y_t = (n_t^T)^\alpha / v_t, \quad (45)$$

$$v_t = (1-\theta) \tilde{Z}_t^{-\epsilon} + \theta v_{t-1} (\pi_t/\pi)^\epsilon, \quad (46)$$

$$1 = (1-\theta) \tilde{Z}_t^{1-\epsilon} + \theta (\pi_t/\pi)^{\epsilon-1}, \quad (47)$$

the conditions for the treasury

$$\tau_t - \tau = \psi \left( (b_{T,t-1} + p_t^{LT} b_{t-1}^{LT}) \pi_t^{-1} - (b_T + p^{LT} b^{LT}) / \pi \right), \quad (48)$$

$$E_t p_{t+1}^{LT} = 1 + \rho E_t q_{t+1}^{LT} \quad (49)$$

$$b_{T,t} = \Gamma b_{T,t-1} \pi_t^{-1}, \quad (50)$$

$$(b_{T,t-1} + p_t^{LT} b_{t-1}^{LT}) \pi_t^{-1} + \tau_t = (b_{T,t}/R_t^G) + q_t^{LT} b_t^{LT} + (1 - 1/R_t^G) b_{C,t} + (R_t^m - 1) i_t, \quad (51)$$

the central bank

$$i_t = m_t^H - m_{t-1}^H \pi_t^{-1} + m_t^R + i_t^{LT} + i_t^{MBS} + i_t^\epsilon, \quad (52)$$

$$m_t^H = b_{T,t} - b_t, \quad (53)$$

$$m_t^R = \Omega m_t^H, \quad (54)$$

$$m_t^T = m_t^H + m_t^R + i_t^{LT} + i_t^{MBS} + i_t^\epsilon \quad (55)$$

$$R_t^m = \max \left\{ 1, (R_{t-1}^m)^{\rho_R} (R^m)^{1-\rho_R} (\pi_t/\pi)^{\rho_\pi(1-\rho_R)} (y_t/y)^{\rho_y(1-\rho_R)} \right\} \quad (56)$$

the market clearing conditions

$$y_t = \Xi_t + s \cdot c_{p,t} + (1-s) c_{i,t} \quad (57)$$

$$H = s \cdot h_{p,t} + (1-s) h_{i,t} \quad (58)$$

and transversality conditions, given the with fixed supply  $H$ , initial values  $b_{-1} > 0$ ,  $b_{T,-1} > 0$ ,  $b_{-1}^{LT} > 0$ ,  $m_{-1}^H > 0$ ,  $\pi_{-1} > 0$ ,  $v_{-1} = 1$ , and the exogenous processes for  $\{z_t^{LT}, z_t, z_t^\Xi\}_{t=0}^\infty$  and *i.i.d.* innovations with mean zero  $\{\varepsilon_t^{LT}, \varepsilon_t, \varepsilon_t^\Xi\}_{t=0}^\infty$ . Further, banking costs follow  $\Xi_t = z_t^\Xi \kappa [b_{b,t}^M]^\iota [m_{t-1}^H/\pi_t + i_t]^{-\iota}$  with  $\partial \Xi_t / \partial b_t^M = \iota \Xi_t / b_t^M$ ,  $\partial \Xi_t / \partial m_{t-1}^H = -\iota \Xi_t / [\pi_t (m_{t-1}^H \pi_t^{-1} + i_t)]$ , and  $\partial \Xi_t / \partial i_t = -\iota \Xi_t / (m_{t-1}^H \pi_t^{-1} + i_t)$ .

## 5.2 Data

In this section, we briefly describe the data used in this study. Our main source is the FRED database (<https://research.stlouisfed.org/fred2/>).

To calibrate the long run value of  $R^m$ , we use the time series on the effective federal funds rate (FEDFUNDS), of  $R^G$  the one-year treasury constant maturity rate (DGS1), of  $R^L$  the Fannie Mae 30-year current-coupon MBS yields (MTGEFNCL.IND from Bloomberg) and of  $\pi$  the GDP

implicit price deflator (GDPDEF). To calculate the real interest rate for the calibration of  $\beta^p$ , we use the 3 month and 30-year treasury constant maturity rates (DGS3MO and DGS30).

To calibrate the shock processes, we use the time series on mortgage-backed securities held by the Federal Reserve (MBST) from FRED and the time series on US Agency MBS outstanding from the website of the Securities Industry and Financial Markets Association (SIFMA) ([www.sifma.org](http://www.sifma.org)). Finally, we use the GDP time series from FRED to get MBS held by the Fed in percent on GDP as it is shown in Figure 1. For Figure 2, we further use the credit easing balance sheet data from Fed Cleveland.

### 5.3 MBS Purchase Programs

The MBS purchase program in QE1 is summarized in Table 2. The table shows MBS purchases of the Fed in billions of dollars as well as relative to total agency MBS outstanding for the corresponding time periods. The bottom row shows the approximation process  $z_t$ .

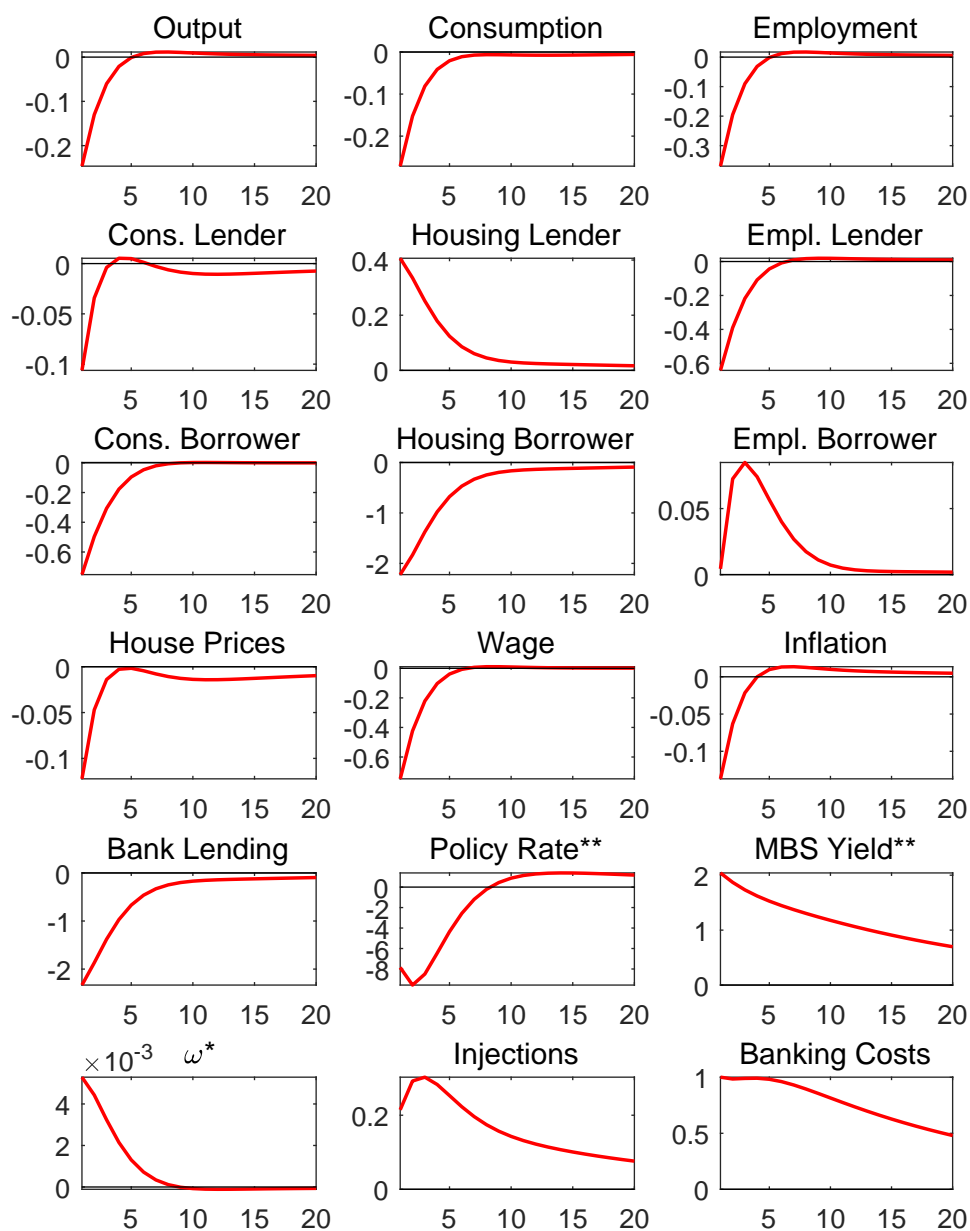
**Table 2: FED MBS Purchases and Shock Processes in QE1.**

Quarter	08Q4	09Q1	09Q2	09Q3	09Q4	10Q1	10Q2	Total
Quarter of QE1	1	2	3	4	5	6	7	7
MBS Purchases in:								
\$ billions	0	236	231	225	216	160	49	1117
% of total AMBS	0	4.7	4.5	4.3	4.0	2.9	0.9	21
$z_t - 1$	0	0.047	0.045	0.042	0.037	0.03	0.022	

### 5.4 Additional Impulse Response Functions

The impulse responses displayed in Figure 8 show deviations of each variable  $x_t$  from its steady state value  $x$ , i.e.  $x_t^{obs} = 100 \log \frac{x_t}{x}$ , in response to a banking cost shock with an impulse of  $\varepsilon_1^\Xi = 0.014$ , which implies a 1 percent increase in banking costs, and an AR coefficient of  $\rho_\Xi = 0.948$ . As exceptions, starred variables show level deviations and double-starred ones show bps deviations. We consider shocks that are sufficiently small to ensure a binding borrowing constraint for impatient households (6) and a binding money supply constraint (12). The IRFs refer to the benchmark calibration given in Table 1.

As Figure 8 indicates, the banking cost shock reduces banks' loan supply and increases MBS yields, which lead to a fall in house prices. Reduced lending, higher rates on loans, and the drop in the value of their collateral, worsen the borrowing conditions of impatient households (the borrowing constraints tightens, as  $\omega$  increases), such that these households demand less consumption goods and housing. In total, the shock has contractionary effects on output and consumption as well as on wages and inflation.



**Figure 8: Impulse response functions.**

*Notes:* IRFs to a banking cost shock with  $\varepsilon_1^{\Xi} = 0.014$  and  $\rho_{\Xi} = 0.948$  implying a banking cost increase of 1 percent from steady state. The lines show percentage deviations from steady state, except for starred variables showing level deviations and double-starred ones showing bps deviations.